

C E L E B R A T I N G

30

THE  
CATHOLIC  
FOUNDATION

Y E A R S

THE CATHOLIC FOUNDATION

2015 ANNUAL REPORT



## 1985

*The Catholic Foundation is established by Bishop James A. Griffin, along with other clergy and lay leaders in the community.*

## 1986

*The Sistine Choir performs to benefit the Foundation. Funds from this performance, along with diocesan contributions, made possible tuition grants of nearly \$225,000 to 648 families and 1,281 students.*

## 1987

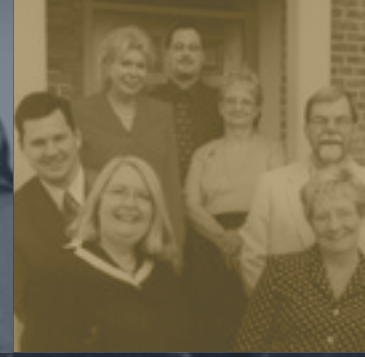
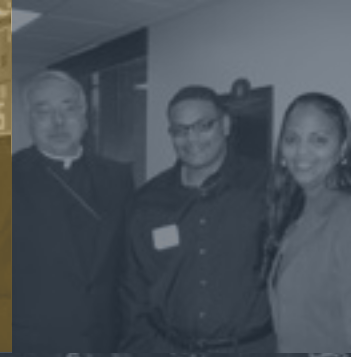
*The \$10 million Legacy of Catholic Learning campaign funds an endowment for Catholic education.*

## 1988

*The Church Maintenance & Repair Fund is created by an anonymous donor with an establishing gift of \$100,000.*

## 1993

*For the first time, the Foundation distributed nearly \$1 million in grants in single year.*



## 1995

*After 10 years in operation, The Catholic Foundation holds over \$24 million in endowed funds to benefit the parishes, schools and organizations in the diocese.*

## 1999

*The Catholic Foundation exceeds \$10 million in impact dollars distributed to the parishes, schools and organizations in the diocese.*

## 2000

*\$48 million raised in The Challenge in Changing Times campaign, funding six endowments to support parish needs across the diocese. The first grants from the campaign total \$200,000.*

## 2004

*The Catholic Foundation reaches \$25 million in impact distributed to the Catholic community. Bishop Griffin announces his retirement and Bishop Frederick F. Campbell is named 10th Bishop of Columbus.*

## 2005

*Twenty years after an initial \$1 million in assets, the Foundation approaches \$95 million in managed assets.*

---

## OUR MISSION

*In Christ, The Catholic Foundation inspires giving and assists donors to provide for the long-term needs of the Diocese of Columbus.*

---

## KEEP YOUR GIFTS IN OUR FAITH

*The Catholic Foundation is the only foundation in the Diocese of Columbus that invests your gifts in alignment with the teachings of the Catholic Church. Our portfolios follow the United States Conference of Catholic Bishops investment policies, and we carefully screen all charitable organizations that we fund to ensure they are also in alignment with Catholic teachings.*

---

## OUR FOUR PILLARS

*The Catholic Foundation focuses its funding in four pillars of our Catholic faith: Parish Life, Catholic Education & Faith Formation, Social Services and Vocations.*



---

### A LETTER FROM OUR BISHOP

My dear brothers and sisters in Christ,

According to the Gospel of John, Jesus proclaimed, "As the Father has sent me, I am sending you." This faith motivates us to help others in need and to care for others by sharing our resources.

This year, The Catholic Foundation celebrates 30 years of providing resources for the many needs of the organizations in the Diocese of Columbus. The Catholic Foundation was established to encourage generous faithful Catholics to support these ongoing needs by sharing their own resources through an endowment fund. Even when we are no longer present in the earthly world, an endowment fund allows us to continue to share our gifts and help to grow the faith.

As we reflect on the past 30 years and look forward to the future, we consider the message of the prophet Jeremiah, "For I know well the plans I have in mind for you, plans for your welfare and not for woe, so as to give you a future of hope."

In honor of this anniversary year, I encourage you to consider a gift to an endowment fund at The Catholic Foundation and allow your generosity to proclaim the faith far into the future.

May God continue to bless and keep you. With every best wish, I remain,

Sincerely yours in Christ,

**MOST REVEREND FREDERICK F. CAMPBELL, D.D., PH.D.**

## A LETTER FROM THE CEO

Dear friends in Christ,

I'm excited to share with you this year's annual report, *Celebrating 30 Years*. Throughout our history, The Catholic Foundation has been blessed with many things to celebrate and give thanks for, and that is especially true this year. Throughout this most exciting and impactful year, the Foundation distributed over 1,300 grants amounting in \$9.5 million to support our four pillars of Parish Life, Catholic Education and Formation, Vocations and Social Services. We exceeded our record for the third year in a row, increasing grant funding from last year by 46%! Additionally, we exceeded previous records by opening 73 new endowment funds and other funds. This is truly a testament to the faithful in our diocese strengthening their commitment to keeping their gifts in the faith. This was a record-breaking year because of you, and we are all so thankful for that!

While we are excited to see these numbers, we're also excited to reflect on the growth and maturity of The Catholic Foundation over the last 30 years. The Foundation started in 1985 as a small operation housed in the diocesan offices, with just \$1 million in managed assets. By our 20th anniversary, we had moved to private offices and handled \$95 million in managed assets. Today, we fill our own building with 10 professional staff members and manage over \$151 million in assets.

Our grants program also evolved to reflect the growth of the Foundation. We awarded our first grants in 1986, to help with tuition assistance. In 1993, we distributed \$1 million

in grants for the first time in a single year. By 2004, the Foundation distributed a total of \$25 million, and today that number exceeds \$86 million. Not only does The Catholic Foundation award more total grants, but our grants are more collaborative, strategic and meaningful. We work hand-in-hand with our donors, our grantees and the diocese to determine the best course of action to reach a desired outcome, and that allows us to extend the impact of our financial support beyond what we ever thought possible.

As I reflect on 30 years of many blessings, I would like to extend my gratitude to our current Board of Trustees, Trustee Alumni and many staff who helped to guide and shape the Foundation over the years, and continue to do so even beyond their official years of service. I also want to thank you, our donors, friends and partners, for your continued support of our Catholic faith through The Catholic Foundation. We touched countless lives thanks to your generosity, and we hope it is evident that your gifts are igniting transformational change. As we look ahead to the next 30 years, the Foundation anticipates making even greater strides in furthering our Catholic mission.

I encourage you to consider how best to support your parish or Catholic organization, and the role that the Foundation can play in your giving plan. With your help and with Christ as our guide, The Catholic Foundation will continue to be a resource for the future of our faith and our diocese.

In Christ,

**LOREN P. BROWN | PRESIDENT & CEO**



Loren P. Brown

### 2007

*The Focus Funds are established to support key areas of need, including education, parish life and social services.*

### 2010

*Impact dollars distributed to the Catholic community reach a total of \$50 million in the Foundation's 25th year. The Dei Gratia award is established to recognize individuals or organizations for their faith and generosity.*

### 2013

*The Catholic Foundation distributed nearly \$6 million in impact dollars, breaking previous records for grants in a single year.*

### 2015

*For the third year in a row, the Foundation celebrated its biggest year ever for grants with \$9.5 million distributed – bringing the 30-year impact total to over \$86 million.*

**“BRENDA AND I LEARNED TO  
TREASURE THE GIFTS GOD GAVE US”**



---

## **CELEBRATING A LEGACY OF EDUCATION**

Adeline Pax Laihr followed a long line of strong women, and served as a model of strength and a beacon of light during her lifetime. She worked tirelessly for her children, ensuring they received a higher education and had the ability to pursue their dreams.

Adeline's family placed a high value on education throughout many generations. Her great-grandmother served as the unofficial schoolteacher and nurse midwife in a budding community in Ohio. Adeline's own mother attended school through the eighth grade, and then served as an aide at the school. Adeline excelled in school, and because her mother recognized this, she made arrangements for Adeline to live with family in another town in order to attend high school. Adeline earned state honors in Math and Latin, graduated with distinction, and received a scholarship to Mount St. Joseph College in Cincinnati.

“She wasn't able to use the scholarship because she needed to work to help the family,” Adeline's daughter, Karen, recalled. “I think that really bothered her, because she knew there were others like her who needed help.”

When Adeline's husband passed on after just 15 years of marriage, she again returned to the workforce. However, she never lost sight of the importance of education. She taught her daughters, Karen and Brenda, to read and she encouraged the girls to participate in the daily care of their brother, Bruce, who was born with Down syndrome and passed to eternal life as a toddler.

“Brenda and I learned to treasure the gifts God gave us as we cared for our brother. Our mother taught us the importance of compassion and faith, in addition to the value of education,” Karen said.

“Mother and her mother lived by the adage, ‘What you put into the life of another, comes back into your own,’” Brenda added.

Through Adeline's example, Karen developed a life-long love for reading while Brenda embraced science and medicine. Their mother's ardent commitment to education eventually allowed them the resources to attend college for their respective vocations. Karen became a teacher and librarian, eventually retiring after 42 years at St. Thomas the Apostle and All Saints Academy. Brenda became a nurse, and continues to work in California after 40 years in the profession.

After ensuring her daughters received their degrees, Adeline also returned to school. She received her Associate of Science in Business Administration from Franklin University.

"It was a sense of accomplishment for her," Karen explained.

Adeline passed on quite a legacy to Karen and Brenda. From her, they learned to be strong in the rough times, to trust in God and to honor commitments. Adeline was a resourceful, devout steward of God's graces. She saved despite her circumstances to care for the needs of others in the Catholic faith that meant so much to her. Fittingly, Adeline's legacy continues beyond her earthly years through The Joseph J. Laihr and Adeline Pax Laihr Scholarship Fund, which provides scholarships in the fields of education and nursing.

"Our mother felt blessed to work with the graces she received to allow Brenda and me to reach our vocations," Karen said. "She wanted other students to have the same opportunity."

"Patience, respect and compassion were the hallmark qualities of our mother. Infused with these qualities, I was prepared to launch my nursing career," Brenda said. "My best opportunity, for which I will be eternally grateful, was being able to give true hands-on care to Mother in her last days.

"So Mother's blessings have come full circle and will continue through the recipients of the Laihr Scholarships for Education and Nursing," she added.



# SCHOLARSHIP FUND

---

## **JOSEPH J. LAIHR AND ADELINE PAX LAIHR SCHOLARSHIP FUND**

*This fund shall provide scholarship grants to no less than two graduating high school seniors from the Diocese of Columbus who have been nominated by a parish leader for willingness to serve others and are interested in pursuing higher education for the vocation of nursing or teaching.*

*The first two scholarships in the amount of \$20,000 each were distributed in the spring of 2015.*

*For 2015, the Karen Louise Laihr Teaching Scholarship was awarded to Kaleigh Golamb, a graduate of Bishop Watterson High School, and the Brenda Jo Lair Galbraith Nursing Scholarship was awarded to Lindsay Birnbrich, a graduate of Hilliard Bradley High School.*





**“THIS HAS CENTRALIZED  
THE CATHOLIC COMMUNITY.  
WE’RE ALL WORKING FOR  
ONE PURPOSE”**

*Staff and Volunteers at St. Francis Outreach Center,  
photo courtesy of Catholic Social Services*

---

## **CELEBRATING COLLABORATION IN CHRIST**

After sitting vacant for several years, the St. Joseph Monastery in Portsmouth is now a flutter of activity thanks to collaboration between several social service agencies and the parishes of Scioto County. On October 1, 2014, the newly named St. Francis Outreach Center officially opened its doors, sparking a glimmer of hope in this poverty-stricken community.

At the center, Catholic Social Services runs a bookstore and offers a variety of services including client education and intervention programs, emergency assistance and even a Christmas program that supplies 1,000 children with gifts and provides over 900 holiday food baskets. Raphael's Hands offers post-abortion healing, and St. Vincent de Paul runs a clothing closet and food pantry. Previously, these services were scattered throughout Scioto County

at different locations. By housing all of the resources in one location, the organizations can better serve their clients.

“The experience for the people is better because they no longer have to jump through hoops to receive services,” explained Rachel Lustig, President & CEO of Catholic Social Services. “We’re providing a more holistic experience.”

However, the St. Francis Outreach Center wouldn’t exist without the tremendous support of the seven parishes in Scioto County. For instance, food pantry donations and operations run through the center, but often the distributions to the community still occur at the parish level. The St. Vincent de Paul Society for each of the seven parishes also contributes with donations and emergency assistance funds, and the parishioners and greater Catholic community provide countless hours of volunteer work.



"This has centralized the Catholic community. We're all working for one purpose," said Barbara McKenzie, Regional Director of Catholic Social Services. "You walk in and can see what we're all doing together, in one place."

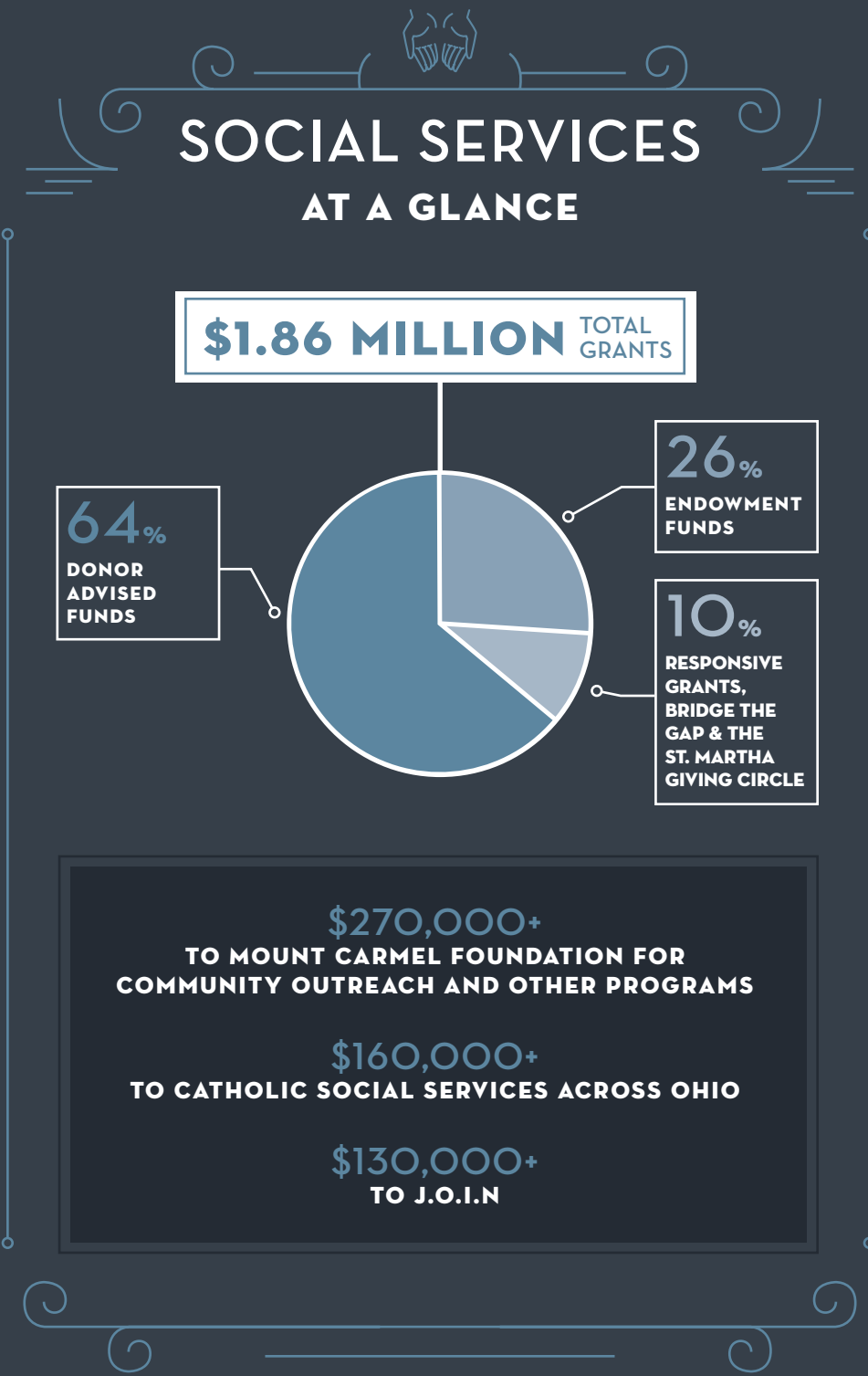
The change is evident in numbers, too, with 100% more volunteer hours and 150% more volunteers year-over-year from 2013 to 2014 after the center opened. The agencies also reported a 30% increase in clients served.

"The community is utilizing what we have available at the center," explained McKenzie. "People come and express the peace that they feel here. They feel welcome coming into the building."

As it approaches its one-year anniversary, the St. Francis Outreach Center continues to evolve. McKenzie is currently working on plans to open The Shepherd's Table soup kitchen, hopefully in October. With 19.4% of the Scioto County population dealing with food insecurity, this will help address a great need. She also sees the building becoming somewhat of a community center: high school students often come to volunteer after school, and the center once hosted a local wedding shower in an unused space.

"It's [the collaboration] just awe-inspiring," McKenzie said. "Every day when walking to work, I say 'thank you' to God. We are so blessed."

The Catholic Foundation is honored to play a role in the incredible collaboration happening in Scioto County. Catholic Social Services received two Focus grants from the Foundation in order to help launch the operation at St. Francis Outreach Center.





**“THE FRUIT OF AN AMAZING PARISH WILL BE A CONSTANT OUTFLOW OF DISCIPLES ...”**

Diocese of Columbus Participants at The Amazing Parish Conference in Denver, in April

---

## **CELEBRATING** **AMAZING PARISH COMMUNITIES**

Our parishes give us a place to gather, a sense of community and a tangible home for our faith. In partnership with generous donors, The Catholic Foundation strengthened its commitment to Parish Life this year by offering a special grant cycle to send twenty Pastors, and up to four of his team members, to attend *The Amazing Parish* conference in Denver.

“Everything we do at the Foundation is centered around supporting the Catholic faith,” said Loren Brown, President & CEO. “By providing the resources for 100 people to attend this conference, we expect thousands to grow in their faith journey as our Pastors and their teams bring home new ideas and strategies to share with their parishes.”

After experiencing *The Amazing Parish* firsthand, Pastors from the diocese returned renewed with many exciting ideas to implement at home. After returning from the conference, Father Daniel Millisor and Father Jim Colopy, of Our Lady of Perpetual Help Parish (OLPH), assembled an official strategic team to assist with this process.

“No pastor, not even the best one, can run a parish on his own,” Father Millisor said. “Every pastor needs a team, a special group of leaders who are collectively committed to helping him make the parish alive and vibrant, and bring more people to Christ and His Church.”

The team used the summer to strategize and shape a program, publishing a series of articles in their bulletin that brought together insights gained from the conference to share with the community. They made plans to strengthen existing programs, and looked for

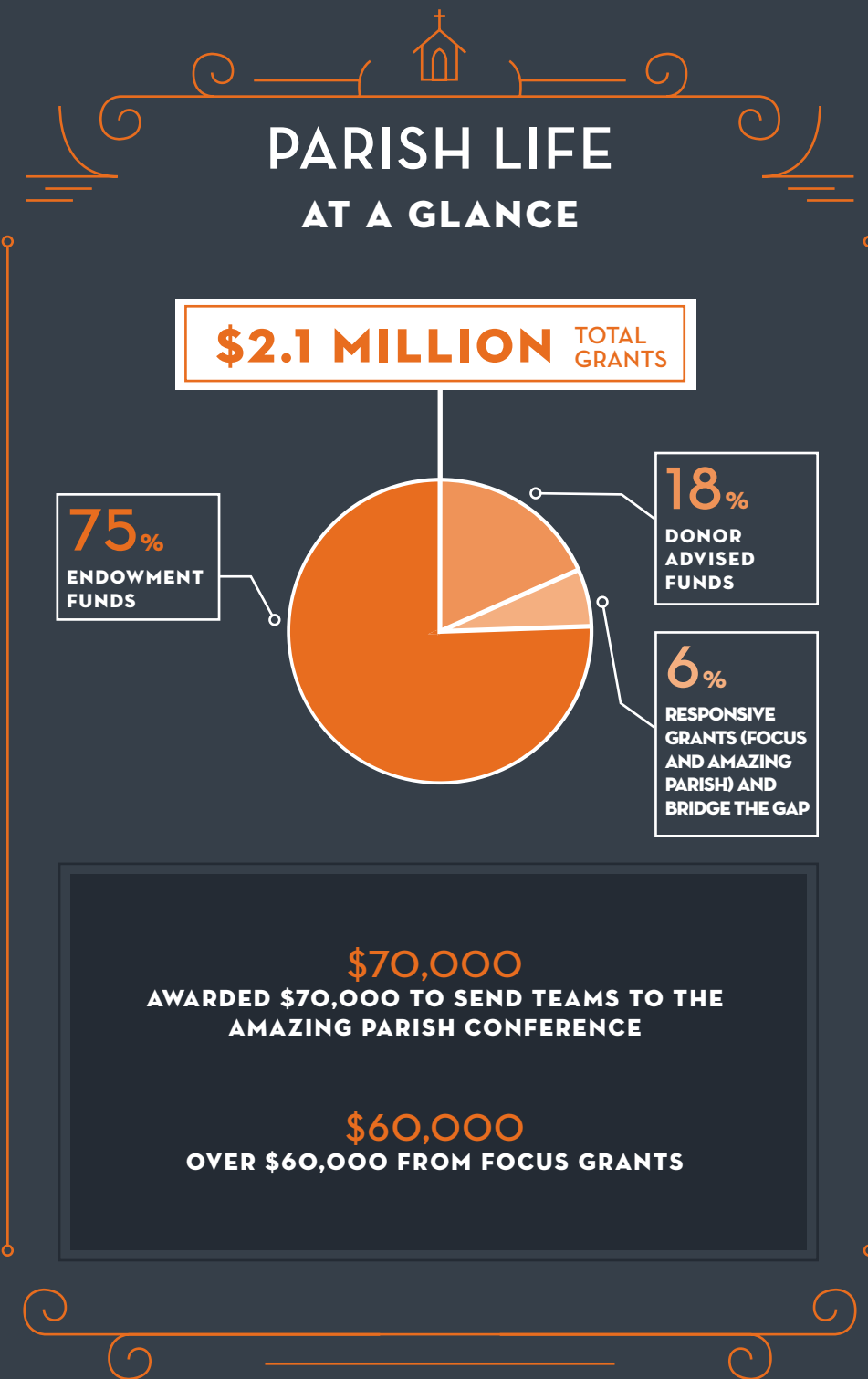
ways to improve upon identified weaknesses in the parish. The planning culminated in a mini-Amazing Parish conference for team leaders and catechists at OLPH, where attendees had the opportunity to form action groups and create plans for their own expertise areas for the upcoming year.

OLPH's strategic work this summer is just one example of an outcome from *The Amazing Parish* conference. Each parish that attended the conference learned tools to move towards their own vision and mission, while adapting to individual parish circumstances. The attending Pastors and their teams returned energized and enlightened to serve their parishes in more amazing ways.

"The fruit of an amazing parish will be a constant outflow of disciples who go into the world to serve their brothers and sisters," Father Millisor said. "A parish must help its people do this by teaching them how, and by giving them opportunities for service and for sharing the Gospel."

As one of its four pillars, The Catholic Foundation was excited to renew a focus on Parish Life and offer funding to help these parishes develop a vision for growth within their communities. The benefit to the parish, and to the Catholic faith, has the potential to span generations.

"We returned from Denver on fire, and still are," Father Millisor added.





**“LEAVING A GIFT LIKE THIS  
IS A WONDERFUL WAY TO  
EXPRESS APPRECIATION TO  
OUR PRIESTS...”**

*Monsignor James Le'Roy Tonkinson Ruef,  
who passed away on January 12, 2015*

---

## **CELEBRATING OUR PRIESTLY FATHERS**

Throughout scripture, Christ calls priests to fill countless roles; they serve as the mediators between God and man, overseers of the Church, and guardians of the faithful. It is through their divine ministry that Catholics come to understand Christ on a deeper level. The Catechism of the Catholic Church explains that Holy Orders is the sacrament through which the mission entrusted by Christ to His apostles continues to be exercised in the Church until the end of time. Hebrews 5:6 says, 'You are a priest forever according to the order of Melchizedek'.

Thus, a priest's work never ceases to exist, and many priests in the Diocese of Columbus even make plans to continue their work well beyond their earthly lives. Through estate planning and establishing endowment funds,

they ensure perpetual financial support for other priests. In just the past year, The Catholic Foundation established eight new funds created by, or in honor of, priests in our diocese.

For example, the *Monsignor James Le'Roy Tonkinson Ruef Fund for the Training of Priests* was created to provide support for the formation of seminarians in the diocese. By leaving a gift in his will, Monsignor Ruef solidified his commitment to ensuring that all men interested in pursuing a call to religious life have the resources to answer God's call.

“Like many of our priests, Monsignor Ruef had the incredible foresight to create a plan for his estate that aligned with his values and interests,” said Loren Brown, President & CEO of The Catholic Foundation.

While Monsignor Ruef was committed to providing for priests in the

beginning of their journey, The Catholic Foundation also works with many priests and individuals who feel strongly about providing for priests towards the end of their journey. There is a great need to secure funding to ensure the financial stability of priests who retire after serving the Church, and younger generations of priests collaborated with donors to respond to this need. This year, for example, the *Father Frank Stanton Endowment Fund for the Long Term Care of Priests in the Diocese of Columbus* was established to serve the ongoing needs of priests after retirement.

The Catholic Foundation also guides individuals, parishes and other groups in establishing funds to honor priests from the diocese. For instance, The *Monsignor Missimi Christian Athlete Scholarship Fund* awards scholarship grants to eighth grade Immaculate Conception (Columbus) student athletes who will attend a Catholic high school. This fund honors Immaculate Conception's beloved Monsignor Anthony Missimi, who retired in 2008.

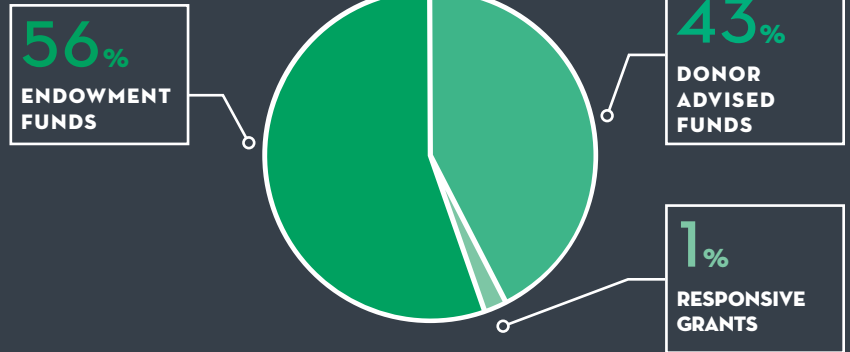
"Over the years, we've had many priests establish a fund through an estate gift, just as we've worked with many donors who wish to honor a priest," Brown said. "We hope that more individuals will consider supporting the religious vocations in this way."

The Catholic Foundation encourages donors, including priests, to consider establishing a fund or leaving a gift to support the priests in the Diocese of Columbus. In addition to individually named funds, the Foundation also administers funds such as the *Support for Vocations Fund*, the *Diocesan Seminarian Assistance Fund* and the *Long-Term Healthcare for Priests Fund*.

"Leaving a gift like this is a wonderful way to express appreciation to our priests and all religious who dedicated their lives to guiding us in ours," Brown added.

## VOCATIONS AT A GLANCE

**\$717,000** TOTAL GRANTS



### FUNDS OPENED THIS YEAR

- *Father Frank Stanton Endowment Fund for the Long Term Care of Priests in the Diocese of Columbus*
- *Father James J. Slevin Memorial Endowment Fund*
- *Father Joe Stanton Endowment Fund for Saint Vincent de Paul Society*
- *Monsignor James Le'Roy Tonkinson Ruef Fund for the Center for Performing Arts of Ohio Northern University*
- *Monsignor James Le'Roy Tonkinson Ruef Fund for the Training of Priests*
- *Monsignor Missimi Christian Athlete Scholarship Fund*
- *Monsignor Robert E. Schneider Endowment Fund*



**“YOU GET TO SEE THE FRUITS  
OF YOUR LABOR. IT’S AN  
AWESOME MINISTRY.”**

*Deacon Don Robers holds artwork  
created by a participant in the Pickaway  
Correctional Institute Prison Ministry*

---

## **CELEBRATING** **SPIRITUAL TRANSFORMATIONS**

Off in the quiet plains of Pickaway County, a spiritual transformation is happening in an unexpected place. Each Monday, Deacon Don Robers (St. John the Evangelist Parish, Logan) spends the day ministering to inmates at the Pickaway Correctional Institute where he serves as the Catholic Chaplain.

“It’s one of the few things that I thoroughly look forward to doing,” Deacon Don explained. “I’ll do it as long as I can.”

Deacon Don spends much of the day in consultations with the men and always has a line waiting to see him. He teaches the men about apostolic succession, praying the Holy Rosary and the Catechism. He

also offers RCIA, and Father Machnik (St. Joseph Parish, Circleville) comes once a month for Mass, baptisms and confirmations.

Rather than allowing these individuals to feel hopeless and abandoned, Deacon Don points them in the right direction on their journey in faith.

In fact, Deacon Don spends much of each visit just listening.

“They have nobody who talks to them or who cares about them,” he said. “I let them make phone calls to loved ones, I write letters to judges on their behalf.”

In the afternoon, Deacon Don shows a Catholic or Christian-based movie that serves as an opportunity to evangelize and bring in new

men, Catholic or non-Catholic alike. This reputation of always having an open door spread quickly. When he took over as Catholic Chaplain 10 years ago, only eight men showed up each week. Today, anywhere from 20 – 30 men show up to the various activities Deacon Don offers.

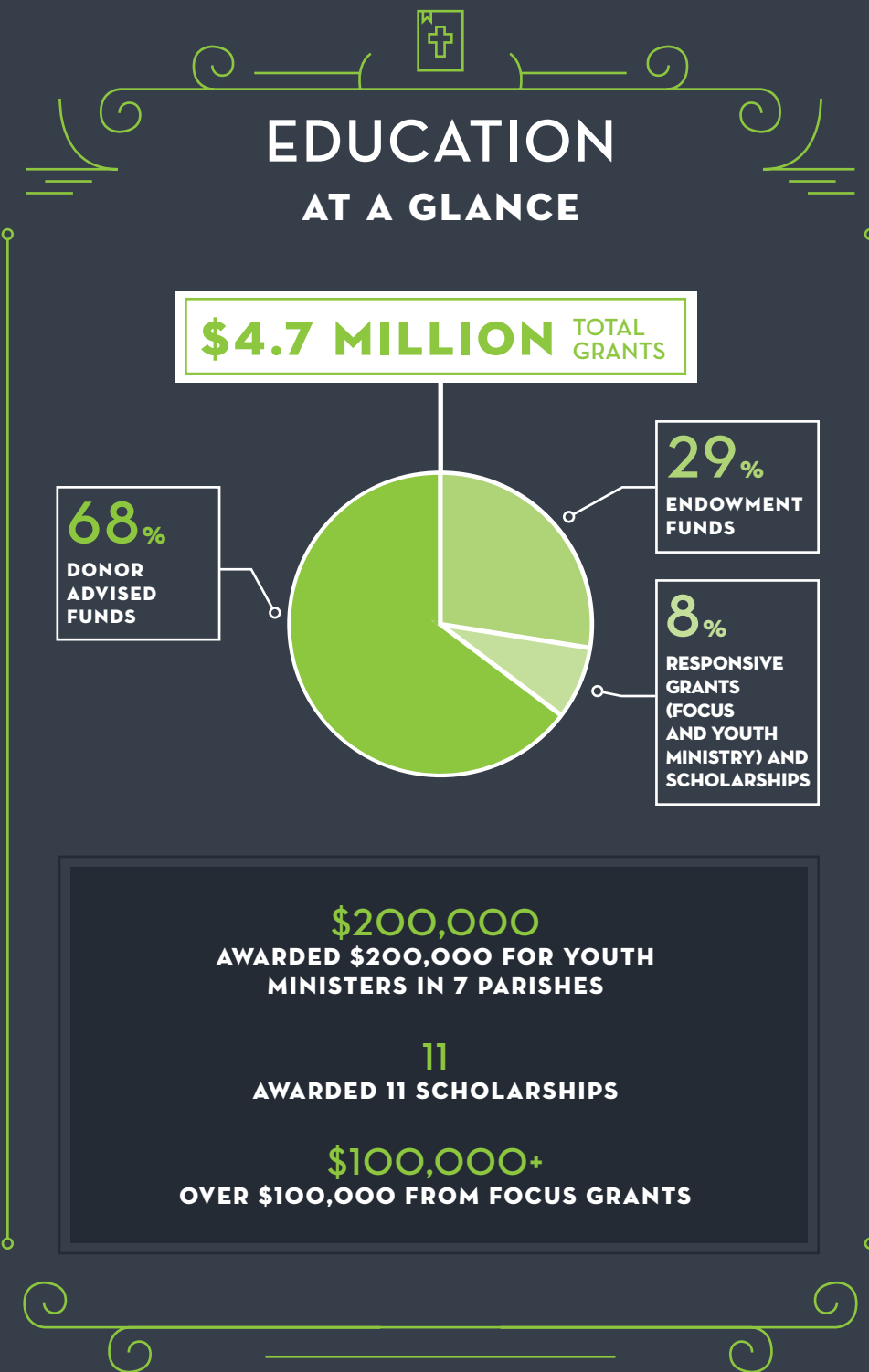
“If the people in the pew would evangelize like some of these guys, the Churches would be full,” Deacon Don said. “The men are really hungry; most have been away from the Church for a long time.”

In the last 10 years, Deacon Don estimates that approximately 30 men came into the Catholic Church through his ministry. He occasionally receives letters or phone calls from men who were released from the facility.

“That’s really rewarding,” he said. “You get to see the fruits of your labor. It’s an awesome ministry.”

With little to no funding, the ministry is always in need of bibles, catechisms, and new religious videos to enhance the programs and open the doors for more inmates to experience the Catholic faith. For the past two years, Deacon Don received a Focus Grant from The Catholic Foundation to help purchase bibles (in Spanish and English), Catechisms and religious videos. Half of the inmates attending the services are converts, and Deacon Don is eager to draw in even more men. With the proper resources, an even greater number of inmates will be reminded of their value as children of God.

“I always know what’s going to happen on Monday – I just don’t know who it is until I get there. The catechesis starts right away.”





**“OUR ANCESTORS MADE SACRIFICES TO PROVIDE US THIS BEAUTIFUL CHURCH ... IT IS TIME FOR US TO ENSURE THAT IT WILL BE AVAILABLE FOR GENERATIONS TO COME.”**

St. Mary Parish, Chillicothe

---

## **C E L E B R A T I N G** **A HOUSEHOLD OF FAITH**

Standing in the historical district of Chillicothe for nearly 150 years, St. Mary Parish is a symbol of the city’s Irish Catholic heritage. Parishioners recognize St. Mary’s lighted tower for its historical significance, and are proud to identify as members of a church built on a solid foundation of faith.

However, while the celebration of Mass and God’s love transcends time, the buildings that serve as homes to our Catholic community deteriorate over the years. In order for St. Mary to continue to serve as a home in which blessings of worship could be experienced, renovations were necessary.

“While our faith family remains vibrant and strong, the church is showing its age,” said Father Lawrence Hummer, Pastor of St. Mary Parish. “Our ancestors made sacrifices to provide us this beautiful church, we have loved and cared for it, but it is time for us to ensure that it will be available for generations to come.”

To assure that St. Mary continues to represent the powerful faith of its parishioners, the parish launched the *Our Turn, Our Time, Our Home* capital campaign. This five year multi-purpose initiative consists of interior and exterior repairs to preserve the historical structure of the building. The initial phase includes the replacement of the church’s slate roof, followed by other renovations to improve the safety of the building and parish campus. Phase II of the campaign is dedicated to repairing the beautiful stained glass windows that serve as symbols of faith to the entire Chillicothe community.



“Preserving St. Mary Church helps to sustain the rich history that the church represents not only for our parish family, but also the community it resides in,” said Farther Hummer. “It is now Our Turn and Our Time to make sure Our Home is preserved for generations to come.”

Rather than embarking on this endeavor alone, St. Mary collaborated with The Catholic Foundation to bring the vision of the *Our Turn, Our Time, Our Home* campaign to life by leveraging several financial opportunities. Annually, the parish receives a sizable distribution from the robust St. Mary, Chillicothe Endowment Fund, as well as other endowments held at The Catholic Foundation. These funds helped to support the capital campaign. Additionally, over the last few years, St. Mary received a Focus grant and a grant from *The Challenge in Changing Times* in order to fund specific portions of the renovations.

St. Mary also gained tremendous campaign support from its parishioners through building improvement envelopes and pledges. With the overwhelming support of its parishioners, coupled with the creative use of The Catholic Foundation’s financial offerings, St. Mary is well on its way to meeting the campaign goal.

The mission statement of St. Mary calls all parishioners to understand their role in and with Christ as ‘members of the household of faith’. Just as the parish joins together as a community to reflect Christ’s love to others, the church must also symbolize the strength of our Catholic community. Through collaboration with The Catholic Foundation and generous parishioners, St. Mary Parish will continue to serve as a household of faith and a symbol to the Chillicothe community for generations to come.



# ENDOWMENT FUND

*An Endowment Fund provides an annual source of funding to a Catholic organization of your choice. This fund is designed to function in perpetuity, making it possible for you to ensure long-term financial support to your chosen cause. Once established, anyone can make additional contributions to the fund in any dollar amount.*

## **KEY BENEFITS**

- *Endowment Funds allow you to designate to any Catholic organization, or leave unrestricted to serve the greatest need*
- *The Catholic Foundation manages the fund and distributes income to the selected organization*
- *Open with cash, marketable securities or other assets*
- *Ability to fund at death with an estate gift or designation in a will*
- *Invested in accordance with the United States Conference of Catholic Bishops guidelines for Socially Responsible Investments*
- *Avoid capital gains taxes on long-term, highly appreciated assets*
- *Reduction in income taxes*



# BENEFICIARIES

Recipients of grants from our Endowment Funds, Donor Advised Funds and Responsive Grant Cycles



## EDUCATION

ADOREMUS  
ALL SAINTS ACADEMY  
ARCHBISHOP MOELLER HIGH SCHOOL  
ARCHDIOCESE OF CINCINNATI  
ARCHDIOCESE OF DENVER  
BISHOP FLAGET SCHOOL  
BISHOP HARTLEY HIGH SCHOOL  
BISHOP READY HIGH SCHOOL  
BISHOP WATTERSON HIGH SCHOOL  
BISHOP'S ANNUAL APPEAL  
BLACK CATHOLIC MINISTRIES OF COLUMBUS  
BLESSSED SACRAMENT SCHOOL  
CALVERT CATHOLIC SCHOOLS  
CARDINAL NEWMAN SOCIETY  
CATHOLIC ANSWERS, INC.  
CATHOLIC CENTRAL HIGH SCHOOL  
CATHOLIC CHARISMATIC RENEWAL, INC.  
CATHOLIC LAYMEN'S RETREAT LEAGUE  
CATHOLIC LEAGUE  
CATHOLIC YOUTH SUMMER CAMP, INC.  
CHAMINADE HIGH SCHOOL  
CHRISTINA ANN ALLWEIN DONOR ADVISED FUND  
COLUMBUS CATHOLIC MEN'S MINISTRY  
COLUMBUS CATHOLIC WOMEN'S CONFERENCE  
COLUMBUS SCHOOL FOR GIRLS

COLUMBUS STATE COMMUNITY COLLEGE  
COMING HOME NETWORK INTERNATIONAL  
CORRECTIONAL RECEPTION CENTER PRISON MINISTRY  
COVINGTON CATHOLIC HIGH SCHOOL  
CRISTO REY COLUMBUS HIGH SCHOOL  
CUM CHRISTO  
DETROIT PUBLIC TELEVISION  
DIOCESE OF COLUMBUS  
DIOCESE OF COLUMBUS - OFFICE OF CATHOLIC SCHOOLS  
DIOCESE OF COLUMBUS - OFFICE OF COMMUNICATIONS  
DIOCESE OF COLUMBUS - OFFICE OF DEVELOPMENT & PLANNING  
DIOCESE OF COLUMBUS - OFFICE OF RELIGIOUS EDUCATION AND CATECHESIS  
ELDER HIGH SCHOOL  
EQUESTRIAN ORDER OF THE HOLY SEPULCHRE  
EWTN TELEVISION NETWORK  
FAMILY HONOR, INC.  
FELLOWSHIP OF CATHOLIC UNIVERSITY STUDENTS  
FRANCISCAN UNIVERSITY OF STEUBENVILLE  
GEORGETOWN UNIVERSITY  
HAITIAN CATHOLIC COMMUNITY  
HASTINGS MIDDLE SCHOOL PARENT TEACHER ORGANIZATION  
HEART TO HEART  
HOLY TRINITY SCHOOL  
JESUIT SPIRITUAL CENTER AT MILFORD  
JUBILEE MUSEUM AND CATHOLIC CULTURAL CENTER

KENT STATE UNIVERSITY  
KOREAN CATHOLIC COMMUNITY  
LIGHTHOUSE CATHOLIC MEDIA, NFP  
LONDON CORRECTIONAL INSTITUTION PRISON MINISTRY  
MARTIN DE PORRES CENTER  
MIAMI UNIVERSITY  
MOUNT CARMEL COLLEGE OF NURSING  
NET MINISTRIES  
NEWARK CATHOLIC HIGH SCHOOL  
NOTRE DAME ACADEMY  
NOTRE DAME ELEMENTARY SCHOOL  
NOTRE DAME JR./SR. HIGH SCHOOL  
OHIO DOMINICAN UNIVERSITY  
OHIO STATE UNIVERSITY FOUNDATION  
OUR LADY OF PERPETUAL HELP SCHOOL  
PICKAWAY CORRECTIONAL INSTITUTION PRISON MINISTRY  
PRESENTATION MINISTRIES  
SACRED HEART RADIO  
SETON HIGH SCHOOL  
SETON SCHOOL  
SPIRITUALITY NETWORK  
ST. ANDREW SCHOOL  
ST. ANTHONY SCHOOL  
ST. BERNADETTE SCHOOL  
ST. BRENDAN SCHOOL  
ST. BRIGID OF KILDARE SCHOOL  
ST. CECILIA SCHOOL  
ST. CHARLES PREPARATORY SCHOOL  
ST. EDMUND CAMPION ACADEMY  
ST. EDWARD HIGH SCHOOL  
ST. FRANCIS DE SALES SCHOOL  
ST. FRANCIS DESALES HIGH SCHOOL  
ST. GABRIEL CATHOLIC RADIO 820 AM  
ST. IGNATIUS HIGH SCHOOL  
ST. JOHN'S JESUIT HIGH SCHOOL  
ST. JOSEPH MONTESSORI SCHOOL

ST. JOSEPH SCHOOL  
ST. MARY MAGDALENE SCHOOL  
ST. MARY SCHOOL, COLUMBUS  
ST. MARY SCHOOL, LANCASTER  
ST. MARY SCHOOL, MARION  
ST. MATTHEW SCHOOL  
ST. MATTHIAS SCHOOL  
ST. MICHAEL SCHOOL  
ST. PAUL'S OUTREACH  
ST. PETER CLAVER SCHOOL  
ST. ROSE SCHOOL  
ST. THERESE'S RETREAT CENTER  
ST. TIMOTHY SCHOOL  
THE ACTON INSTITUTE  
THE COLUMBUS FOUNDATION  
THE DYNAMIC CATHOLIC INSTITUTE  
TUSCARAWAS CENTRAL CATHOLIC ELEMENTARY SCHOOL  
TUSCARAWAS CENTRAL CATHOLIC JR./SR. HIGH SCHOOL  
UNIVERSITY OF DAYTON  
UNIVERSITY OF NOTRE DAME  
URBI ET ORBI COMMUNICATIONS  
WESTMINSTER COLLEGE  
WILLIAM V. FISHER CATHOLIC HIGH SCHOOL  
WILLIAM V. FISHER CATHOLIC HIGH SCHOOL FOUNDATION  
WORTHINGTON CHRISTIAN SCHOOLS INC.  
XAVIER UNIVERSITY



## PARISH LIFE

ARCHDIOCESE OF CINCINNATI  
ARCHDIOCESE OF DENVER  
BISHOP'S ANNUAL APPEAL  
CATHOLIC CHURCH EXTENSION SOCIETY

CHRIST THE KING CATHOLIC CHURCH, EVERGREEN, CO  
CHRIST THE KING PARISH  
CHURCH OF OUR LADY OF THE MIRACULOUS MEDAL  
CHURCH OF ST. EDWARD THE CONFESSOR  
CHURCH OF THE ATONEMENT  
CHURCH OF THE BLESSED SACRAMENT  
CHURCH OF THE NATIVITY  
CHURCH OF THE RESURRECTION  
CORPUS CHRISTI PARISH  
DIOCESE OF COLUMBUS  
DIOCESE OF COLUMBUS - OFFICE OF DEVELOPMENT & PLANNING  
GRACE FELLOWSHIP  
HOLY CROSS PARISH  
HOLY FAMILY PARISH  
HOLY REDEEMER PARISH  
HOLY SPIRIT PARISH  
HOLY TRINITY PARISH, BOLIVAR  
HOLY TRINITY PARISH, JACKSON  
HOLY TRINITY PARISH, WEST PORTSMOUTH  
IMMACULATE CONCEPTION PARISH, COLUMBUS  
IMMACULATE CONCEPTION PARISH, DENNISON  
IMMACULATE CONCEPTION PARISH, KENTON  
MASS TIMES TRUST  
NATIONAL SHRINE OF ST. DYMPHNA  
OLD ST. MARY'S CHURCH  
OUR LADY OF LOURDES PARISH, MARYSVILLE  
OUR LADY OF LOURDES PARISH, WEST PORTSMOUTH  
OUR LADY OF MOUNT CARMEL CHURCH, ST. JOHN, VI  
OUR LADY OF MOUNT CARMEL PARISH, BUCKEYE LAKE  
OUR LADY OF PEACE PARISH  
OUR LADY OF PERPETUAL HELP, SOLDOTNA, AK  
OUR LADY OF PERPETUAL HELP PARISH, GROVE CITY

OUR LADY OF SORROWS PARISH  
OUR LADY OF VICTORY PARISH  
SACRED HEART PARISH, COLUMBUS  
SACRED HEART PARISH, COSHOCTON  
SACRED HEART PARISH, NEW PHILLY  
SACRED HEARTS PARISH, CARDINGTON  
SPIRIT OF CHRIST CATHOLIC CHURCH  
SS. AUGUSTINE & GABRIEL PARISH  
SS. PETER & PAUL PARISH  
SS. SIMON AND JUDE PARISH  
ST. AGATHA PARISH  
ST. AGNES PARISH  
ST. ALOYSIUS PARISH  
ST. ANDREW PARISH  
ST. ANTHONY PARISH  
ST. BERNADETTE PARISH  
ST. BERNARD OF MONTJOUX PARISH  
ST. BERNARD PARISH  
ST. BRENDAN PARISH  
ST. BRIGID OF KILDARE PARISH  
ST. CATHARINE OF SIENA PARISH  
ST. CECILIA PARISH  
ST. CHRISTOPHER PARISH  
ST. COLMAN OF CLOYNE PARISH  
ST. DOMINIC PARISH  
ST. ELIZABETH ANN SETON PARISH  
ST. ELIZABETH PARISH  
ST. FRANCIS DE SALES PARISH  
ST. FRANCIS OF ASSISI PARISH  
ST. JAMES THE LESS PARISH  
ST. JOAN OF ARC PARISH  
ST. JOHN NEUMANN PARISH  
ST. JOHN THE BAPTIST PARISH  
ST. JOHN THE EVANGELIST PARISH  
ST. JOSEPH CATHEDRAL  
ST. JOSEPH PARISH, CIRCLEVILLE  
ST. JOSEPH PARISH, DOVER

ST. JOSEPH PARISH, PLAIN CITY  
ST. JOSEPH PARISH, SUGAR GROVE  
ST. JOSEPH PARISH, SUMMIT HILL, PA  
ST. LADISLAS PARISH  
ST. LEO PRESERVATION SOCIETY  
ST. LEONARD PARISH  
ST. MARGARET OF CORTONA PARISH  
ST. MARK PARISH  
ST. MARY MAGDALENE PARISH  
ST. MARY OF THE ANNUNCIATION PARISH  
ST. MARY OF THE ASSUMPTION PARISH  
ST. MARY PARISH, CHILlicothe  
ST. MARY PARISH, DELAWARE  
ST. MARY PARISH, MARION  
ST. MARY QUEEN OF THE MISSIONS PARISH  
ST. MARY, MOTHER OF GOD PARISH  
ST. MATTHEW PARISH  
ST. MICHAEL PARISH  
ST. MONICA PARISH  
ST. NICHOLAS PARISH  
ST. PATRICK PARISH, COLUMBUS  
ST. PATRICK PARISH, JUNCTION CITY  
ST. PAUL THE APOSTLE PARISH  
ST. PETER IN CHAINS CATHEDRAL  
ST. PETER IN CHAINS PARISH  
ST. PETER PARISH, CHILlicothe  
ST. PETER PARISH, COLUMBUS  
ST. PETER PARISH, MILLERSBURG  
ST. PHILIP THE APOSTLE PARISH  
ST. PIUS X PARISH  
ST. RAPHAEL PARISH  
ST. ROSE PARISH  
ST. SYLVESTER PARISH  
ST. THOMAS AQUINAS PARISH  
ST. THOMAS MORE NEWMAN CENTER  
ST. THOMAS OF CANTERBURY PARISH  
ST. THOMAS THE APOSTLE PARISH

ST. TIMOTHY PARISH  
ST. VINCENT DE PAUL PARISH  
THE COLUMBUS FOUNDATION  
THE ST. JOSEPH FOUNDATION  
WRIGHT MEMORIAL UNITED METHODIST CHURCH



## SOCIAL SERVICES

ALZHEIMERS FOUNDATION OF AMERICA INC.  
AMERICAN CENTER FOR LAW & JUSTICE, DISTRICT OF COLUMBIA, INC.  
AMERICAN HEART ASSOCIATION  
AMERICAN RED CROSS OF GREATER COLUMBUS  
ANGELS WAY MATERNITY HOME  
ARCHDIOCESE OF CINCINNATI  
ARCHDIOCESE OF DENVER  
BACK IN HIS ARMS AGAIN  
BALLET METROPOLITAN, INC.  
BETHESDA HEALING MINISTRY  
BIG BROTHERS & BIG SISTERS ASSOCIATION OF GREATER COLUMBUS  
BIG BROTHERS/BIG SISTERS  
BIRTHRIGHT OF COLUMBUS, INC.  
BISHOP GRIFFIN SERVICE CENTER  
BISHOP'S ANNUAL APPEAL  
BITTERSWEET FARMS  
BOY SCOUTS OF AMERICA  
BUCKEYE TRAIL ASSOCIATION, INC.  
BUILDERS EXCHANGE FOUNDATION  
CAMP O'BANNON OF LICKING COUNTY  
CANCER PREVENTION INSTITUTE OF CALIFORNIA  
CAPITAL AREA HUMANE SOCIETY  
CARING VOICE COALITION  
CATHOLIC NEAR EAST WELFARE ASSOCIATION

CATHOLIC RELIEF SERVICES  
CATHOLIC SOCIAL SERVICES, COLUMBUS  
CATHOLIC SOCIAL SERVICES, NEWARK  
CATHOLIC SOCIAL SERVICES, PORTSMOUTH  
CATHOLICS FOR A CURE  
CATHOLICS NEAR EAST WELFARE ASSOCIATION  
CATHOLICS UNITED FOR THE POOR  
CELL THERAPY FOUNDATION  
CHALDEAN AMERICAN ASSOCIATION FOR HEALTH PROFESSIONALS  
CHILDHOOD LEAGUE INC.  
CHILDREN'S HUNGER ALLIANCE  
CHRIST CHILD SOCIETY OF COLUMBUS  
CHRIST CHILD SOCIETY OF SARASOTA  
CHRISTIAN APPALACHIAN PROJECT  
CINCINNATI BALLET  
CITY GOSPEL MISSION  
CLEARWATER MARINE AQUARIUM  
COLUMBUS MUSEUM OF ART  
COLUMBUS RIGHT TO LIFE EDUCATIONAL FOUNDATION  
COLUMBUS ROTARY FOUNDATION  
COLUMBUS SYMPHONY ORCHESTRA, INC.  
COLUMBUS ZOOLOGICAL PARK ASSOCIATION  
COMMUNITY KITCHEN, INC.  
COMMUNITY SHELTER BOARD  
CONCORD COUNSELING SERVICES, INC.  
COUNTRY CLUB AT MUIRFIELD VILLAGE FOUNDATION  
COVENANT HOUSE  
CREATED EQUAL  
CROSS CATHOLIC OUTREACH  
DANIEL ARNOLD MEMORIAL FOUNDATION  
DIOCESE OF COLUMBUS  
DIOCESE OF COLUMBUS - OFFICE FOR SOCIAL CONCERNS  
DIOCESE OF COLUMBUS - OFFICE OF DEVELOPMENT & PLANNING

DISABLED AMERICAN VETERANS  
DOMINICAN LEARNING CENTER  
EASTER SEALS OF CENTRAL AND SOUTHEAST OHIO  
EDWARD CHARLES FOUNDATION  
EDWARDSVILLE COMMUNITY FOUNDATION  
EDWARDSVILLE NIGHBORS IN NEED  
EQUIPPING MINISTRIES INTERNATIONAL, INC.  
ETC THEATRE COMPANY INC.  
FAITH MISSION  
FELLOWSHIP OF CHRISTIAN ATHLETES  
FLYING HORSE FARMS  
FOOD FOR THE POOR  
FOUNDATION FOR APPALACHIAN OHIO  
FOUNDATION FOR HOSPICE OF CENTRAL OHIO  
FRANCISCAN FOUNDATION FOR THE HOLY LAND  
FRATERNUS INC.  
FURNITURE BANK OF CENTRAL OHIO  
GLADDEN COMMUNITY HOUSE  
GOODWILL INDUSTRIES OF CENTRAL OHIO, INC.  
GRACEHAVEN  
GROVE CITY OHIO LITTLE LEAGUE  
HABITAT FOR HUMANITY INTERNATIONAL  
HARDIN COUNTY SOUP  
HARMONY PROJECT  
HEARTBEAT INTERNATIONAL  
HEARTBEATS OF LICKING COUNTY  
HOLY FAMILY HOSPITAL OF BETHLEHEM FOUNDATION  
HOLY FAMILY SOUP KITCHEN  
JAMAICA OUTREACH PROGRAM INC.  
JOHN PAUL II MEDICAL RESEARCH INSTITUTE  
JOIN  
JUNIOR LEAGUE OF COLUMBUS  
KINDER WOMEN'S CARE CENTER  
KINO BORDER INITIATIVE INC.

KNIGHTS OF COLUMBUS #4603  
KNIGHTS OF COLUMBUS CHARITIES USA  
KNIGHTS OF COLUMBUS COUNCIL # 4471  
KNIGHTS OF COLUMBUS COUNCIL #10863  
KNIGHTS OF COLUMBUS COUNCIL #14282  
LAWRENCE FUNDERBURKE YOUTH ORGANIZATION INC.  
LIBERTY INSTITUTE  
LICKING COUNTY COALITION FOR HOUSING  
LICKING COUNTY COALITION OF CARE  
LICKING COUNTY FOUNDATION  
LICKING COUNTY YMCA  
LIFE ISSUES INSTITUTE, INC.  
LIFECARE ALLIANCE  
MAKE-A-WISH FOUNDATION OF AMERICA  
MALTESER INTERNATIONAL  
MARCH FOR LIFE EDUCATION AND DEFENSE FUND  
MARY ROSE MISSION  
MARY'S MEALS  
MATTHEW 25 MINISTRIES INC.  
MAYAN FAMILIES  
MENTAL HEALTH ASSOCIATION OF LICKING COUNTY, INC.  
MERCY HEALTH FOUNDATION  
MID-OHIO FOODBANK  
MOTHER ANGELINE MCCRORY MANOR  
MOUNT CARMEL FOUNDATION  
N.A.M.I. FRANKLIN COUNTY  
NATIONAL RIGHT TO LIFE EDUCATIONAL TRUST FUND  
NATIONWIDE CHILDREN'S HOSPITAL  
NEW DIRECTIONS CAREER CENTER  
NORTHERN KENTUCKY RIGHT TO LIFE  
OHIO HEALTH FOUNDATION  
OHIO RIGHT TO LIFE SOCIETY EDUCATIONAL FUND  
OHIO STATE UNIVERSITY COMPREHENSIVE CANCER CENTER

OHIO STATE UNIVERSITY WEXNER MEDICAL CENTER  
ONE MORE SOUL, INC.  
ORDER OF MALTA, FEDERAL ASSOCIATION  
PARSONS AVENUE REDEVELOPMENT CORP.  
PATRONS OF THE ARTS IN THE VATICAN MUSEUMS OHIO CHAPTER  
PEOPLE OF LIFE, THE PRO-LIFE CAMPAIGN OF USCCB  
PETER'S PENCE  
POPULATION RESEARCH INSTITUTE  
PREGNANCY CENTER WEST, INC.  
PREGNANCY DECISION HEALTH CENTERS  
PRIESTS FOR LIFE  
PRO-LIFE ACTION LEAGUE  
RONALD McDONALD HOUSE CHARITIES OF CENTRAL OHIO  
RUN THE RACE CLUB  
SERENITY HOUSING FOUNDATION  
SERENITY STREET FOUNDATION  
SERTOMA INC.  
SHARE, PREGNANCY AND INFANT LOSS SUPPORT, INC.  
SHAW FESTIVAL FOUNDATION  
SHEPHERD'S CORNER  
SOCIETY OF ST. VINCENT DE PAUL  
SOUTHWEST WILDLIFE CONSERVATION CENTER  
SPECIAL OLYMPICS INC.  
SPORTS LEADER  
ST. FRANCIS EVANGELIZATION CENTER  
ST. JOHN LEARNING CENTER  
ST. JOSEPH CATHEDRAL MEAL PROGRAM  
ST. JUDE CHILDREN'S RESEARCH HOSPITAL  
ST. STEPHEN'S COMMUNITY HOUSE  
ST. VINCENT DE PAUL CENTER  
ST. VINCENT DE PAUL HOUSING FACILITY  
ST. VINCENT DE PAUL SOCIETY  
ST. VINCENT FAMILY CENTER

STRATFORD SHAKESPEARE FESTIVAL OF AMERICA  
THE BRIAN MUHA MEMORIAL FOUNDATION, INC.  
THE COLUMBUS FOUNDATION  
THE COMMUNITY HEALTH CLINIC  
THE FINANCIAL EXECUTIVES NETWORKING GROUP  
THE GATHERING PLACE  
THE HOMELESS FAMILY FOUNDATION  
THE IBC NETWORK FOUNDATION  
THE NATIONAL CATHOLIC BIOETHICS CENTER  
THE SALVATION ARMY OF GREATER COLUMBUS  
THE SALVATION ARMY OF LICKING COUNTY  
THE SHANE CENTER FOR THERAPEUTIC HORSEMANSHIP, INC.  
THE VILLAS AT ST. THERESE ASSISTED LIVING, INC.  
THE WORKS  
THOMAS MORE SOCIETY  
TWIGS OF NATIONWIDE CHILDREN'S HOSPITAL  
UNBOUND  
WEST VIRGINIA HEALTH CARE FOUNDATION  
WGUC 90.9 FM  
WILLOW RIDGE THERAPEUTIC RIDING FACILITY  
WOMEN AFFIRMING WOMEN  
WONDERWORK INC.  
WORDPLAY  
WORLD PARTNERSHIP FOUNDATION  
WOUNDED WARRIOR PROJECT



## VOCATIONS

ARCHDIOCESE FOR THE MILITARY SERVICES, USA  
ARCHDIOCESE OF CINCINNATI  
ARCHDIOCESE OF DENVER  
ASSOCIATES OF BRIGHTEN CARMEL  
BISHOP'S ANNUAL APPEAL  
BROTHERS OF THE POOR OF ST. FRANCIS  
CAMBONI MISSIONARIES  
CHANCERY OFFICE  
CHILDREN OF MARY  
CONGREGATION OF 3RD ORDER OF ST. FRANCIS OF MARY IMMACULATE  
COUPLE TO COUPLE LEAGUE INTERNATIONAL INC.  
DAUGHTERS OF ST. DOMINIC  
DIOCESE OF COLUMBUS  
DIOCESE OF COLUMBUS - OFFICE OF DEVELOPMENT & PLANNING  
DIOCESE OF COLUMBUS - OFFICE OF MARRIAGE AND FAMILY LIFE  
DIOCESE OF COLUMBUS - OFFICE OF VOCATIONS  
DIOCESE OF COLUMBUS - TRIBUNAL OFFICE  
DISCALCED CARMELITE FRIARS  
DISCIPLES OF THE LORD JESUS CHRIST  
DIVINE WORD MISSIONARIES  
DOMINICAN SISTERS OF PEACE  
FAMILY RESEARCH COUNCIL  
FOCUS ON THE FAMILY  
FRANCISCAN DAUGHTERS OF MARY  
FRANCISCAN FRIARS OF THE RENEWAL  
FRANCISCAN MISSION ASSOCIATES  
GLENMARY HOME MISSIONERS  
GREGORIAN UNIVERSITY FOUNDATION

INTERNATIONAL THEOLOGICAL INSTITUTE FOR STUDIES ON MARRIAGE AND THE FAMILY, USA  
JESUIT CENTER AT WERNERSVILLE  
JESUIT INTERNATIONAL MISSIONS  
LONG TERM HEALTHCARD FOR PRIESTS  
MADONNA HOUSE  
MARY MOTHER OF GOD MISSION SOCIETY  
MATER ECCLESIAE FOR VOCATIONS  
MISSIONARY OBLATES OF MARY IMMACULATE  
MISSIONARY SISTERS OF MARY IMMACULATE  
NORBERTINE COMMUNITY OF NEW MEXICO  
PONTIFICAL COLLEGE JOSEPHINUM  
POOR CLARE NUNS  
PRIESTS OF THE SACRED HEART  
SALESIAN MISSIONS INC.  
SALESIAN SOCIETY  
SECULAR ORDER DISCALCED CARMELITES  
SERAPHIC MASS ASSOCIATION  
SERRA CLUB OF COLUMBUS  
SISTERS OF LIFE  
SISTERS OF NOTRE DAME DE NAMUR  
SISTERS OF ST. FRANCIS OF MARY IMMACULATE  
SISTERS OF ST. FRANCIS OF THE NEUMANN COMMUNITIES  
SISTERS OF THE GOOD SHEPHERD PROVINCE OF MID-NORTH AMERICA  
SISTERS OF THE HOLY CROSS  
SOCIETY FOR THE PROPAGATION OF THE FAITH  
SOCIETY OF ST. PHILIP NERI  
ST. CECILIA CONGREGATION  
ST. PAUL CENTER FOR BIBLICAL THEOLOGY  
THE COLUMBUS FOUNDATION



---

# NEW FUNDS

The Catholic Foundation offers Catholics a way to leave a legacy uniquely aligned with our values and beliefs. The Foundation invests all funds in accordance with the USCCB guidelines for Catholic Socially Responsible Investments. We are honored to steward your gifts to the following new funds.

---

## SCHOLARSHIP

### DICK & PADDY CLEARY FAMILY SCHOLARSHIP FUND

### DOMINIC GREGORY - ST. TIMOTHY SCHOOL SCHOLARSHIP FUND

This fund shall provide scholarship grants to St. Timothy School for students with learning disabilities.

### JOSEPH J. LAIHR & ADELINE PAX LAIHR SCHOLARSHIP FUND

This fund shall provide scholarship grants to no less than two graduating high school seniors from the Diocese of Columbus who have been nominated by a parish leader for willingness to serve others and are interested in pursuing higher education for the vocation of nursing or teaching.

### MONSIGNOR MISSIMI CHRISTIAN ATHLETE SCHOLARSHIP FUND

This fund shall scholarship grants to 8th grade Immaculate Conception (Columbus) student athletes who will attend a Catholic High School.

---

## ENDOWMENT

### DAVID H. & MARCIA A. BALL MEMORIAL ENDOWMENT FUND

This fund shall equally benefit in their existence The Washington Province of Discalced Carmelite Friars Inc., the Dominican Friars of the Province of St. Joseph and the Pontifical College Josephinum.

### BISHOP HARTLEY FAMILY TREE ENDOWMENT FUND

This fund shall support the ongoing operational needs of Bishop Hartley High School, especially as they relate to the coverage of tuition reduction programs.

### BISHOP WATTERSON MEMORIAL ENDOWMENT FUND

This fund shall provide for tuition support at Bishop Watterson High School, Columbus, Ohio.

### CATHOLIC RELIEF SERVICES ENDOWMENT FUND

This fund shall feed, clothe, shelter, and provide medical care to the poor through Catholic Relief Services, Baltimore, MD.

### CATHOLIC YOUTH SUMMER CAMP "CAMPERSHIP" ENDOWMENT FUND

This fund shall to provide financial assistance to attend the Catholic Youth Summer Camp.

### CHURCH OF THE RESURRECTION SOCIAL CONCERNS MINISTRY ENDOWMENT FUND

This fund shall support and promote the projects, initiatives and programs of the social concerns ministry at The Church of the Resurrection Parish, New Albany, Ohio.

### DENTON FAMILY ENDOWMENT FUND

This fund shall support the needs of the Diocese of Columbus as determined by The Catholic Foundation.

### AUGUSTINE J. & MARY L. DICK MEMORIAL ENDOWMENT FUND

This fund shall provide need based tuition assistance to students in Hardin County, Ohio who wish to attend a Catholic college or university.

### FOLEY FAMILY ENDOWMENT FOR ST. BRIGID OF KILDARE ELEMENTARY SCHOOL

This fund shall provide support for Saint Brigid of Kildare School, Dublin, Ohio, (the "School") and/ or provide tuition assistance (in the form of a yearly gift or refund or reduction of tuition) for some or all the students of the School who are parishioners of Saint Brigid of Kildare Parish.

### GOTTRON FAMILY ENDOWMENT FOR ST. BRIGID OF KILDARE SCHOOL

This fund shall provide for the needs of Saint Brigid of Kildare Elementary School in Dublin, Ohio.

### LAWRENCE HALTER, JR. TUITION ASSISTANCE ENDOWMENT FUND

This fund shall provide tuition assistance to students in financial need who are attending St. Pius X School, Reynoldsburg, Ohio.

### RENATE HARTLINE TUITION ASSISTANCE ENDOWMENT FUND

This fund shall provide tuition assistance to deserving students attending St. Mary School, Marion, Ohio.

### HILLIARD FAMILY ENDOWMENT FUND

This fund shall provide tuition support to students attending or enrolled to attend Bishop Watterson High School provided that the students are in financial need or interested in pursuing the high school business program.

### IMMACULATE CONCEPTION TUITION ASSISTANCE ENDOWMENT FUND

This fund shall provide tuition assistance for school-age children attending Catholic school.

### IMMACULATE CONCEPTION PARISH OF DENNISON, OHIO ENDOWMENT FUND

This fund shall support the ongoing operational needs of the Immaculate Conception Parish of Dennison, Ohio.

### BRENT & PATRICIA JACKSON ENDOWMENT FUND

This fund shall provide support for the general needs of (a) Our Lady of Victory Church, Columbus, Ohio; (b) The Run the Race Club, Columbus, Ohio; (c) Ballet Met, Columbus, Ohio, or its immediate successor; and (d) ProMusica, Columbus, Ohio, or its immediate successor.

### JANE JACQUEMIN-CLARK '68 SPIRIT ENDOWMENT FUND

This fund shall provide tuition support for Bishop Watterson High School.

### JOSEPH J. & ADELINE PAX LAIHR ENDOWMENT FUND

This fund shall provide tuition assistance at Bishop Hartley High School, tuition assistance to Mt. Carmel College of Nursing, and to fund Social Service needs through Bridge the Gap, or similar funding opportunities.

### PATRICIA LAWLOR MEMORIAL ENDOWMENT FUND FOR THE BENEFIT OF CHRIST THE KING PARISH

This fund shall support the needs of Christ the King Parish in Columbus, Ohio.

### PATRICIA LAWLOR MEMORIAL ENDOWMENT FUND FOR THE BENEFIT OF ST. CATHARINE PARISH

This fund shall support the needs of Saint Catharine Parish in Bexley, Ohio.

### PATRICIA LAWLOR MEMORIAL ENDOWMENT FUND FOR THE BENEFIT OF THE CATHOLIC FOUNDATION

This fund shall support the administrative needs of The Foundation of the Catholic Diocese of Columbus.

### PATRICIA LAWLOR MEMORIAL

### ENDOWMENT FUND FOR THE BENEFIT OF THE COLUMBUS DIOCESE

This fund shall support the greatest needs of The Diocese of Columbus.

### JOHN & JEAN NESTER MEMORIAL ENDOWMENT FUND

This fund shall support the Women's Care Center, Columbus, Ohio.

### OUR LADY OF LOURDES PARISH ENDOWMENT FUND

This fund shall support the ongoing general needs of Our Lady of Lourdes Parish, Ada, Ohio.

### OUR LADY OF LOURDES LITURGICAL ENDOWMENT FUND

This fund shall support the liturgical ministry of Our Lady of Lourdes Parish, in Marysville, Ohio.

### OUR LADY OF LOURDES ROSE ANNA COLEMAN MUSIC ENDOWMENT FUND

This fund shall provide support for the music ministry of Our Lady of Lourdes Parish, in Marysville, Ohio.

### OUR LADY OF VICTORY PARISH ENDOWMENT FUND

This fund shall provide for the general needs of the Our Lady of Victory Parish.

### MARI RADEL MEMORIAL ENDOWMENT FUND

In loving memory of Mari Radel, this fund's purpose is to feed, clothe, shelter, and provide medical care to the poor through equal distributions to Hands Together, Springfield, MA, and Catholic Social Services, Columbus, OH.

### MONSIGNOR JAMES LE'ROY TONKINSON RUEF FUND FOR THE CENTER FOR PERFORMING ARTS OF OHIO NORTHERN UNIVERSITY

This fund shall provide support for the general needs of the Center for Performing Arts at Ohio Northern University in Ada, Ohio.

**MONSIGNOR JAMES LE'ROY TONKINSON RUEF FUND FOR THE TRAINING OF PRIESTS**

This fund shall provide support for the formation of seminarians studying for the priesthood of the Diocese of Columbus.

**MONSIGNOR ROBERT E. SCHNEIDER ENDOWMENT FUND**

This fund shall provide financial support toward the educational costs of seminarians in need who are studying for the priesthood of the Catholic Diocese of Columbus.

**DAVID W. SINCEBAUGH, SR. ENDOWMENT FUND**

This fund shall provide tuition assistance to children of parishioners of St. Andrew Parish, Columbus, Ohio, who are attending, or entering, a Catholic high school in the Diocese of Columbus, and who demonstrate financial need.

**FATHER JAMES J. SLEVIN MEMORIAL ENDOWMENT FUND**

This fund shall support the general operational needs of St. Sylvester Parish, Zaleski, Ohio.

**NATE SMITH TUITION ASSISTANCE ENDOWMENT FUND**

This fund shall provide tuition assistance at Saint Mary School, Marion, Ohio.

**ANONYMOUS FUND FOR SOCIAL SERVICES AND RELIGIOUS EDUCATION**

**ST. BENEDICT CAMBRIDGE SCHOOL ENDOWMENT FUND**

This fund shall support the general needs of St. Benedict School in Cambridge, Ohio.

**ST. CHARLES PREPARATORY SCHOOL ENDOWMENT FUND 2015**

This fund shall provide general support for Saint Charles Preparatory School, Columbus, Ohio.

**ST. JOHN XXIII PARISH ENDOWMENT FUND**

This fund shall provide for the

non-operating, long-term needs of the Parish. tuition assistance to students in Hardin County, Ohio who wish to attend a Catholic college or university.

**ST. MARY MAGDALENE ENDOWMENT FUND**

This fund shall provide for the general needs of St. Mary Magdalene Parish and/or School in Columbus, Ohio.

**ST. PATRICK PARISH ELEMENTARY SCHOOL TUITION ASSISTANCE ENDOWMENT FUND**

This fund shall provide tuition assistance to deserving students attending St. Patrick Parish Elementary School, London, Ohio.

**FATHER JOE STANTON ENDOWMENT FUND FOR SAINT VINCENT DE PAUL SOCIETY**

This fund shall provide for the general needs of the Columbus Diocesan Council of Saint Vincent De Paul Society.

**FATHER FRANK STANTON ENDOWMENT FUND FOR THE LONG TERM CARE OF PRIESTS IN THE DIOCESE OF COLUMBUS**

This fund shall provide for the long term care needs of priests in the Diocese of Columbus.

**TOM & LORETTA STANTON ENDOWMENT FUND FOR CATHOLIC SOCIAL SERVICES**

This fund shall provide for the general needs of Catholic Social Services, Columbus, Ohio.

**STEELE FAMILY ENDOWMENT FUND**

This fund shall provide for the general needs of the Mary Garden at Church of the Resurrection in New Albany, Ohio.

**TEHAN-DUNN FAMILY ENDOWMENT FUND**

This fund shall provide for Catholic Social Services to distribute for the greatest need.

**ANONYMOUS FUND FOR BISHOP WATTERSON HIGH SCHOOL**

This fund shall provide tuition support to students attending or enrolled to attend Bishop

Watterson High School provided that the students are in financial need, or for support for materials, facilities, equipment and staffing of the science department.

**WEEKLEY FAMILY ENDOWMENT FUND**

This fund shall provide for the needs of Saint Brigid of Kildare Elementary School in Dublin, Ohio.

**MONSIGNOR JOHN WOLF ENDOWMENT FUND**

This fund shall provide for parishioners at Immaculate Conception Parish, Kenton, Ohio, and Our Lady of Lourdes Parish, Ada, Ohio, who have demonstrated that they are in need of financial assistance due to an extraordinary hardship, emergency, or crisis that they are presently facing.

---

## DONOR ADVISED

**ANONYMOUS DONOR ADVISED FUND**

**DAVID H. & MARCIA A. BALL DONOR ADVISED FUND**

**ROGER & SARAH BAUGHMAN DONOR ADVISED FUND**

**FRANK & SHEILA BETTENDORF DONOR ADVISED FUND**

**DEBORAH A. COLEMAN DONOR ADVISED FUND**

**EYEN FAMILY DONOR ADVISED FUND**

**GRIFFIN FAMILY DONOR ADVISED FUND**

**MOSES FAMILY DONOR ADVISED FUND**

**HILDA R. PEROTTI MEMORIAL DONOR ADVISED FUND**

**SEAN P. REED MEMORIAL DONOR ADVISED FUND**

**ELLEN & EDWARD REIK FAMILY DONOR ADVISED FUND**

**CHUCK ROGERS/BISHOP FENWICK CLASS OF 1969 MEMORIAL DONOR ADVISED FUND**

**ROSS FAMILY DONOR ADVISED FUND**

**DAVID MICHAEL SCHIRA DONOR ADVISED FUND**

**JEROME SKORUPSKI MEMORIAL DONOR ADVISED FUND**

**SOCIETY OF ST. VINCENT DE PAUL DIOCESAN COUNCIL OF COLUMBUS DONOR ADVISED FUND**

**STEELE FAMILY DONOR ADVISED FUND**

**JOHN & CHRISTINE WILLIG DONOR ADVISED FUND**

**DIANA MARIE WINKLER DONOR ADVISED FUND**

---

## ANNUITY

**PATRICIA A. MCMENEMY CHARITABLE GIFT ANNUITY**

# DONORS

**\$250,000+**

ANONYMOUS DONOR  
 ESTATE OF REVEREND MONSIGNOR ANTHONY BORRELLI  
 COMOPEKA INVESTMENTS LIMITED  
 MR. AND MRS. DON W. KELLEY  
 ESTATE OF MARION KLOCKI  
 ESTATE OF THOMAS J. MALONEY  
 MIDWEST MOTOR SUPPLY CO.  
 MR. AND MRS. WILLIAM M. SCHULT

**\$100,000 - \$249,999**

ANONYMOUS DONOR  
 ESTATE OF FRANK J. DAMIAN  
 ESTATE OF REVEREND WILLIAM J. CONNOR  
 DR. AND MRS. JOHN A. FISHER  
 MR. AND MRS. TIMOTHY FOLEY  
 MRS. DOROTHY G. ROTH  
 ST. CHARLES PREPARATORY SCHOOL  
 TTPK Co. II LIMITED PARTNERSHIPS  
 MR. AND MRS. JAMES K. WILLIAMS JR.  
 MR. AND MRS. JOHN T. WILLIG

**\$50,000 - \$99,999**

ANONYMOUS DONOR (2)  
 MR. AND MRS. EUGENE J. ALFONSI  
 MR. AND MRS. PHILIP T. ANGLIM  
 BISHOP WATTERSON HIGH SCHOOL  
 MRS. ELIZABETH M. BOUTSELIS  
 THE COLUMBUS FOUNDATION  
 MS. RITA DEMATTE  
 DIOCESE OF COLUMBUS - FINANCE OFFICE  
 MR. AND MRS. ROBERT J. EYEN

MRS. GERALDINE FERGUSON  
 DR. AND DR. CHRISTOPHER GEORGE  
 MR. AND MRS. RICHARD L. GUMMER  
 ST. JOHN NEUMANN PARISH  
 ST. MATTHEW PARISH  
 TUSCARAWAS CENTRAL CATHOLIC JR./SR. HIGH SCHOOL  
 WILLIAM V. FISHER CATHOLIC HIGH SCHOOL FOUNDATION

**\$10,000 - \$49,999**

ANONYMOUS DONOR (4)  
 GENERAL JAMES M. ABRAHAM  
 MR. AND MS. ROGER A. BAUGHMAN  
 BISHOP HARTLEY HIGH SCHOOL  
 MR. ROBERT T. BOEHM  
 MR. AND MRS. CHUCK BRAMLAGE  
 MR. JOHN BURKE  
 MR. AND MRS. WILLIAM J. BURKE  
 MR. AND MRS. DANIEL T. BURKHART  
 MR. AND MRS. FRED W. CRUM  
 MR. AND MRS. STEPHEN A. DEIBEL SR.  
 REVEREND MONSIGNOR WILLIAM A. DUNN  
 MS. KATHLEEN M. ESTEP  
 MR. AND MRS. ROBERT M. EVERSELE  
 MR. AND MRS. PATRICK J. FEHRING, JR.  
 MR. JACOB J. FISHER AND MRS. M. KATHLEEN GUMMER FISHER  
 MR. AND MRS. PATRICK M. GAVIN  
 MR. AND MRS. JACK F. GIBBONS, SR.  
 MR. AND MRS. SAMUEL J. GREGORY  
 MR. AND MRS. DAVID GRENELL  
 MR. JOSEPH P. GRIFFIN  
 DR. AND MRS. MICHAEL GUERTIN  
 MR. AND MRS. GEORGE A. GUMMER  
 MR. AND MRS. RICHARD GUMMER  
 THE ESTATE OF LAWRENCE H. HALTER JR.  
 HOLY TRINITY PARISH  
 MR. MICHAEL D. HUTT

IMMACULATE CONCEPTION PARISH, COLUMBUS  
 IMMACULATE CONCEPTION PARISH, DENNISON  
 KNIGHTS OF COLUMBUS COUNCIL # 4471  
 MR. MICHAEL KOZLOWSKI  
 MR. AND MRS. RICHARD J. LARKIN  
 MR. AND MRS. JAMES D. MCGILL  
 MS. PATRICIA A. MCMENEMY  
 MR. AND MRS. ROBERT D. MEYERS  
 MR. AND MRS. JAMES R. MICHALEC  
 MR. JOHN H. MILLER  
 DR. JAMES L. MOSES  
 MR. AND MRS. JAMES D. NESTER  
 OUR LADY OF LOURDES PARISH  
 MR. AND MRS. STEPHEN C. PASTERNAK  
 MR. AND MRS. MARK A. RANALLI  
 MR. STEPHEN A. RIEDERER  
 SACRED HEART PARISH  
 MR. D. MICHAEL SCHIRA  
 REVEREND MONSIGNOR ROBERT E. SCHNEIDER  
 MR. AND DR. ROBERT SCHUDA  
 MR. AND MRS. ROBERT F. SHELDON  
 ST. AGATHA SCHOOL  
 ST. BRIGID OF KILDARE PARISH  
 ST. ELIZABETH PARISH  
 ST. MARY MAGDALENE PARISH  
 ST. MARY PARISH  
 ST. MARY PARISH  
 ST. VINCENT DE PAUL PARISH  
 MR. MARK STEELE  
 MR. AND MRS. GREG THOMPSON  
 MR. AND MRS. MATTHEW WEEKLEY  
 DR. AND MRS. KENNETH B. WEISE  
 DR. AND MRS. DAVID WINSTON

**\$1,000 - \$9,999**

ANONYMOUS DONOR  
 MR. AND MRS. DONALD E. ALLWEIN  
 ALTRIA GROUP DISTRIBUTION COMPANY

MR. AND MRS. MICHAEL AVELLANO  
 MR. AND MRS. JOSEPH L. BARROWS  
 MR. AND MRS. ROBERT A. BAUMANN  
 MR. AND MRS. PAUL BERGSTEN  
 MR. AND MRS. FRANK J. BETTENDORF  
 MR. AND MRS. DENNIS C. BOCKUS  
 DR. AND MRS. THOMAS F. BRADY  
 MR. AND MRS. RICHARD E. BREHM  
 MR. AND MRS. DALE T. BRINKMAN  
 MR. AND MRS. LOREN P. BROWN  
 MR. WILLIAM BROWN  
 MR. AND MRS. DANIEL E. BRUENING  
 CARDINAL HEALTH FOUNDATION  
 MS. PATRICIA CASERTA  
 CHRIST THE KING PARISH  
 CHURCH OF THE BLESSED SACRAMENT  
 CHURCH OF THE NATIVITY  
 MS. DEBORAH A. COLEMAN  
 MRS. GEORGEANN C. COREY  
 MR. AND MRS. JAMES CRAMER  
 MR. JAMES A. DICK  
 MR. AND MRS. CHRISTOPHER L. DICKEN  
 MR. AND MRS. JOHN DILORENZO, JR.  
 DIOCESE OF COLUMBUS - TRIBUNAL OFFICE  
 MR. DAVID J. ROBINSON AND MRS. JULIA L. DORRIAN  
 MR. AND MRS. GEORGE P. DOYLE III  
 MR. CURTIS P. DWYER  
 MR. AND MRS. BRIAN S. ELLIOTT  
 MS. AMY FALCONE  
 MR. AND MRS. WILLIAM FANNING  
 DR. AND MRS. THOMAS M. FITZSIMMONS  
 DR. JACOB F. FRONING  
 MR. AND MRS. BRIAN FULTON  
 MR. AND MRS. MICHAEL L. GAMPP  
 MR. AND MRS. GERALD L. GERKER  
 MR. AND MRS. JERRY P. GESWEIN  
 DR. CAROL GILLESPIE  
 MR. AND MRS. FRANK F. GUARASCI SR.  
 MR. AND MRS. CHAD J. GUMMER  
 MR. AND MRS. RICHARD L. GUMMER II

MR. G. PHILLIP HALL  
 MS. CLAUDETTE HERBIG  
 MR. AND MRS. FRANK K. KAM  
 MR. AND MRS. PATRICK KENT  
 MR. AND MRS. JEFFREY S. KLEIN  
 REVEREND MR. JOE KNAPKE AND DR. AMY IMM-KNAPKE  
 KNIGHTS OF COLUMBUS COUNCIL #11445  
 KNIGHTS OF COLUMBUS #5801  
 MS. BARBARA LINING  
 DR. AND MRS. JAMES P. MACKESSY  
 MR. JOHN T. MACKESSY AND MRS. LINDA DAY-MACKESSY  
 MR. AND MRS. DAVID A. MACYNSKI  
 MR. GERALD O. MARTIN  
 MR. JOHN B. MASSEY  
 MIDWEST TRANSATLANTIC LINES, INC.  
 MS. PATRICIA MOLONEY  
 NATIONWIDE UNITED WAY CAMPAIGN  
 MR. AND MRS. DAVID W. OBOY  
 MR. AND MRS. F. GREG PANICCIA  
 MR. JOSEPH J. PATRICK, JR.  
 MR. AND MRS. BRUCE D. PECCI  
 REVEREND MR. AND MRS. DONALD A. POIRIER  
 MR. THOMAS O. RAU  
 MR. AND MRS. EDWARD A. REIK  
 MR. AND MRS. TIMOTHY G. REIK  
 MR. AND MRS. WILLIAM J. RIAT  
 MS. MARY ROGERS  
 MR. AND MRS. DOUGLAS J. ROSS  
 MR. AND MRS. RONALD J. ROSS JR.  
 MR. AND MRS. ROBERT C. ROUSH  
 MR. AND MRS. RONALD L. ROWLAND  
 MR. AND MRS. JONATHAN J. RYAN  
 MR. AND MRS. LEONARD R. SABATINI  
 REVEREND DAVID M. SCHILDER  
 MR. AND MRS. JOHN W. SEIDENSTICKER  
 MR. AND MRS. ANDREW J. SONDERMAN  
 SS. PETER & PAUL PARISH  
 ST. AGATHA PARISH  
 ST. ANDREW PARISH



# DONORS

ST. CATHARINE OF SIENA PARISH  
ST. JOSEPH PARISH  
ST. LEO PRESERVATION SOCIETY  
ST. MARY CEMETERY  
ST. PETER PARISH  
ST. SYLVESTER PARISH  
ST. THOMAS MORE NEWMAN CENTER  
MR. AND MRS. JACK STRADER  
MS. MELODY STUMPF  
MS. GENEVIEVE N. SZUBA  
MR. AND MRS. RONALD A. THOMAS, SR.  
TRUIST  
MS. MARY ELLEN TULLY  
UNITED WAY OF CENTRAL OHIO  
MR. AND MS. THEODORE W. VAN SCOY  
MRS. EDNA C. WHITACRE  
MR. PETER L. WHITE  
MR. AND MRS. JEROME M. WIGGINS  
MS. DIANA MARIE WINKLER  
MR. ROBERT J. ZELLI



MS. JOANNE B. ADAMS  
MR. AND MRS. NATHANIEL E. ALLWEIN  
MR. AND MRS. TIMOTHY D. ALLWEIN  
MR. AND MRS. NORMAN ALTMAN  
MR. AND MRS. HOMER W. ANDERSON  
MR. AND MRS. RODNEY W. ANDERSON  
MR. AND MRS. CARMEN C. ANGELO  
MR. AND MRS. ROBERT E. ARCHER  
MR. AND MRS. KEVIN P. ARNOLD  
MS. PEGGY ARNOLD  
MR. KEVIN ARTER  
MR. AND MRS. JOHN V. ARVIA  
MS. BETH A. ATKINSON  
MR. AND MRS. THOMAS W. ATZBERGER  
BACK IN HIS ARMS AGAIN  
MR. AND MRS. DANIEL BATTLE  
MR. AND MRS. JOHN R. BECKMAN

MR. AND MRS. STEPHEN P. BEDELL  
MS. KATHRYN A. BEITER  
MS. KRISTINA A. BEITER  
MR. AND MRS. P. WILLIAM BEITER  
MR. AND MRS. TIMOTHY A. BESSER  
MR. JAMES D. BISHOP  
MR. KENNETH W. BLISSENBACH  
REVEREND HOMER D. BLUBAUGH  
MR. GREGG R. BOHN AND MRS. MARY J. SCHAFER  
MR. GENE BOSTIC  
MR. AND MRS. OLIVER A. BOUCHER  
MR. AND MRS. JEFF BRADER  
MS. CAROL BRANDEL  
MR. DAVID K. BRANT  
MR. AND MRS. MCCARTHY K. BRAXTON  
MR. JOHN BREEN  
MR. JOE BREHM AND MRS. L. ALICE MCKENNEY  
MS. JODI BRICELAND  
MS. MICHELLE BRIDGES  
MR. AAND MRS. DANIEL E. BRINGARDNER  
MS. ANNA BRITIAN  
MR. THOMAS J. BRYAN AND MRS. EMILY E. ALBRECHT-BRYAN  
REVEREND THOMAS J. BUFFER  
MR. AND MRS. ANTHONY S. BUMBICO  
MR. AND MRS. JAMES R. BURCHFIELD  
MR. CHARLES M. BURKHART  
MS. TINA J. BURTCH  
MR. JOHN A. BUTTLER  
MR. AND MRS. JEFFREY T. CAFMEYER  
MS. LYNN CALDWELL  
MR. RICHARD CALIMANO-SOSA  
MR. AND MRS. GRADY B. CAMPBELL  
MS. KAREN CANNELL  
MR. AND MRS. WILLIAM CARLISLE, III  
MR. AND MRS. CHRISTOPHER A. CARMON  
MS. JEAN CARTER  
MR. AND MRS. ROBERT K. CASEY  
MR. RICHARD L. CHERRY  
MR. AND MRS. LOUIS C. CIMINELLO

MR. AND MRS. THOMAS J. CLEMENTS  
MS. KETHLEEN M. COCHRAN  
MR. AND MRS. PHILIP R. COCHRAN  
MS. HOLLY COLE  
MR. AND MRS. VIRGIL V. COMER JR.  
COMMUNITY FOUNDATION OF WESTERN NORTH CAROLINA, INC.  
MR. AND MRS. LENN CONKLE  
MR. AND MRS. JAMES F. CONNOR  
MR. AND MRS. PATRICK A. CONNOR  
MR. AND MRS. ERIC CONWAY  
MS. ERIN L. CORDLE  
COTTERMAN - WILSON CPAs, INC.  
MS. ABBY C. COVER  
MS. MARY BETH COWANS  
MS. DIANA L. CRAIG  
MR. MICHAEL CRANE  
MS. BEVERLY CREMEANS  
MR. AND MRS. ROBERT J. CUAHONTE  
DR. AND MRS. STEVEN J. CURTIS  
MR. AND MRS. STEVEN A. DALEY  
MR. ANGELO J. DALLAS  
MR. AND MRS. JEFFREY D. DAMRON  
MR. DENNIS JOSEPH DAUGHERTY  
MS. TERESA DAVIDSON  
MR. AND MRS. BRIAN R. DAVIS  
MR. AND MRS. G. GARRETT DAVIS II  
MRS. PAM DAVIS  
MS. KELLY A. DAWES  
MR. AND MRS. THOMAS DEARRING  
MR. AND MRS. CHRISTOPHER J. DEMKO  
MR. AND MRS. SCOTT DEMPSEY  
MR. AND MRS. CHRISTOPHER M. DENZ  
MR. AND MRS. STEPHEN C. DENZ  
MR. AND MRS. MICHAEL J. DICKERSON  
MR. KURT DIERINGER  
MR. ANDREW DiLUCIANO  
MR. AND MRS. NEIL M. DIMOND  
MR. AND MRS. STEVEN D. DINAN  
DIRECT EFFECT SOLUTIONS, INC.  
MS. JOYCE A. DOBSON  
MR. AND MRS. ROBERT J. DODD

DOMINICAN FATHERS  
ESTATE OF THOMAS S. DOMITROVICH  
MR. PATRICK T. DOWDELL  
MR. AND MRS. HUGH D. DOWDS  
MR. AND MRS. PATRICK B. DOYLE  
MR. MICHAEL H. DUFFY  
MS. JEAN M. DURBIN  
MR. AND MRS. THOMAS L. EASLY  
MR. AND MRS. RONALD D. EBERHARD  
MR. AND MRS. RONALD W. EIFERT  
MR. ROBERT ERICKSON  
MR. AND MRS. WALTER F. ERSING  
MR. AND MRS. MICHAEL L. EVANS  
EXCELLENCE IN SPORTSMANSHIP FOR CENTRAL OHIO SOCCER CORP.  
MR. PATRICK J. FAHEY  
MR. AND MRS. KEVIN FEDERER  
DR. JOSEPH F. FIALA AND DR. MARY A. FRISTAD  
MS. CATHY FIELDS  
MS. MARY FILICE  
MR. AND MRS. JOSEPH B. FINAN  
MR. AND MRS. JOHN C. FORSYTHE  
MR. AND MRS. DAVID R. FOSTER  
MR. JOSEPH L. FOX  
MR. ROBERT L. FOX  
MR. AND MRS. CHRISTOPHER FULTZ  
MR. AND MRS. JAMES J. GABEL  
MR. EUGENE GALLO  
MR. AND MRS. JEFFREY M. GARDNER  
MR. AND MRS. ANDREW F. GASER  
MR. AND MRS. MICHAEL GATES  
MS. TERESA M. GELONESE  
MR. AND MRS. JAMES GERNETZKE  
MR. AND MRS. VINCENT T. GIGLIOTTI  
MR. AND MRS. JASON GIHA  
MR. AND MRS. BRIAN GILCHRIST  
MR. AND MRS. CHRISTOPHER M. GILLER  
MR. FRANK F. GILLESPIE  
MR. MICHAEL GORDON  
MR. AND MRS. JOSEPH GOTTRON  
MR. AND MRS. CHARLES L. GRAY

MR. AND MRS. MICHAEL P. GREEN  
MR. AND MRS. PAUL E. GREGER  
MR. ROBERT J. GRIFFITH AND MRS. PATRICIA A. MCJOYNT GRIFFITH  
REV. MONSIGNOR J. COLBY GRIMES  
MR. AND MRS. TED GRIMM  
MR. AND MRS. JOHN A. GROEBER  
MR. AND MRS. JEFF GROOM  
MS. BOBBI MAY-GROSS  
MR. AND MRS. GARY C. GROVE  
MR. STEVE GROVES  
GTM GAUGE SERVICES LLC  
MS. GINA GUAPPONE  
MR. FRANK GUARASCI  
MR. MICHAEL GUARASCI AND MRS. NOREEN SULLIVAN  
MR. RALPH GUARASCI  
MR. AND MRS. MARTIN A. HAAS  
MR. AND MRS. CARL R. HAMMAN  
MS. JOANNA HANEY  
MS. CHRISTINE HANF  
MR. THOMAS R. HANS  
MS. SARAH HARMON  
MS. MARY HARRIS  
MR. AND MRS. FRANCIS J. HARTGE  
MR. AND MRS. MARC C. HAWK  
REVEREND MR. AND MRS. MELVIN B. HAWKINS  
MR. JAMES E. HEISE  
MR. AND MRS. JOHN H. HELLER SR.  
MR. AND MRS. KEVIN G. HENRY  
MR. AND MRS. DONOGH R. HERNON  
MR. AND MRS. RAY W. HETTERSCHIEDT  
MS. MARTHA HICKS  
MR. AND MRS. CHARLIE HILARIO  
MR. THOMAS M. HILL  
MR. AND MRS. RICHARD P. HINTERSCHIED  
MR. AND MRS. MICHAEL P. HOFFMAN  
MR. AND MRS. WILLIAM HOLEHOUSE  
HOLY FAMILY PARISH  
MR. RICHARD HOOKER  
MR. AND MRS. RONALD C. HORN

## DONORS

MR. AND MRS. TIMOTHY A. HORN  
MR. ROBERT HUDSON  
MR. AND MRS. LUKE J. HUECKEL  
MR. AND MRS. WILLIAM J. HUECKEL  
MR. DAVID HUNT  
MR. RICHARD B. IGO  
INSPIRED INTERIORS BY BOYDEN  
MR. DAVID B. ISAACS  
MS. DEBORAH JOHNSON  
MR. AND MRS. MICHAEL K. JOHNSON  
MR. AND MRS. RICHARD J. JOHNSON  
MS. ANGELA JOHNSTON  
MR. AND MRS. CHARLES E. JUDY  
MR. TROY KAHRIG  
MS. SUSAN KAIRIS  
MR. JAMES J. KAMERICK  
MR. AND MRS. STEPHEN L. KEBE  
MR. WILLIAM F. KECK  
MR. AND MRS. RICHARD D. KEENE  
MRS. BARBARA KEGELMEYER  
MR. AND MRS. WILLIAM KELSEY  
MR. AND MRS. LAWRENCE A. KENDALL  
MR. W. RONALD KENREICH  
MR. AND MRS. JAMES KENT  
MR. EUGENE C. KERBER  
MR. AND MRS. CHARLES KIELKOPF  
MR. AND MRS. WILLIAM F. KILLILEA  
MR. ROBERT KINCAID JR.  
DR. AND MRS. CHARLES J. KISTLER JR.  
REVEREND JOSEPH C. KLEE  
MR. AND MRS. MARKO I. KLISOVIC  
KNIGHTS OF COLUMBUS COUNCIL #13379  
OHIO STATE COUNCIL KNIGHTS OF COLUMBUS  
KNIGHTS OF COLUMBUS COUNCIL #11354  
MR. AND MRS. JOSEPH E. KOHLER  
MR. AND MRS. JOHN KOHR  
MR. AND MRS. ALFRED J. KOPEC  
MR. PETER J. KRAJNAK AND MRS. ANN M. CROFT  
MS. BARBARA KRICK  
MR. AND MRS. GREGORY A. KRIVICICH

MR. AND MRS. TERRY KUEHL  
MS. PATRICIA A. KUHN  
MR. GERALD J. KVORTEK  
DR. AND MRS. DAVID G. LALKA  
MS. ALLISON LEONARD  
MS. KRISTIN M. LEWIS  
MR. AND MRS. CHARLES D. LINCH  
MR. AND MRS. GEORGE T. LINDSEY  
MR. TOM LINDSEY  
MS. RACHEL LUSTIG  
MR. AND DR. KENNETH S. LUTTER  
MS. HARRIET LUX  
MS. FRANCES B. MACYNSKI  
MR. AND MRS. JASON MAGALSKI  
MR. AND MRS. JOHN D. MAHAN  
MR. AND MRS. ROBERT F. MAHLER JR.  
MR. AND MRS. WAYNE R. MALLY  
MR. AND MRS. MAX MALONE  
MR. AND MRS. SHAWN MALONE  
MS. CATHERINE L. MALOWNEY  
MR. STEVEN P. MANOS  
MRS. MARIAN R. MANZ  
MR. AND MRS. JOHN MARTIN  
MR. AND MRS. GUSTAVO MARTINEZ  
MR. AND MRS. LESTER MAYNARD  
MS. MARY K. McANDREW  
MR. G. SCOTT McCOMB  
MR. AND MRS. DAVID W. McCONNELL  
MR. AND MRS. ROBERT W. McCURDY  
MR. AND MRS. ROBERT H. McELHENY  
MR. AND MRS. CARL McELROY  
MS. KAITLYN MCGOLDRICK  
MR. AND MRS. TIMOTHY R. McMULLEN  
MR. AND MRS. JAMES D. McNUTT  
MR. AND MRS. MRS. TED McQUAIDE  
MR. AND MRS. GEORGE F. MEDARY  
MR. AND MRS. THOMAS MERRY  
MR. AND MRS. CHARLES D. MERS  
MR. AND MRS. JEFFREY L. METCALF  
MR. KEVIN P. MEYERS  
MS. DEBORAH J. MICHAEL  
MR. AND MRS. BRIAN G. MILLER

MR. STEVEN M. MINNICH  
MS. COLLEEN M. MITCHELL  
MR. AND MRS. DAVID A. MITCHELL  
MR. KEITH MONTGOMERY  
MR. AND MRS. THOMAS J. MULLIGAN  
THE MUNHALL COMPANY  
MS. DOROTHY J. MURNANE  
MS. CATHERINE MURPHY  
MR. AND MRS. TERRY MUSA  
MS. ERIN NEAL  
MS. GAI THI NGUYEN  
MR. AND MRS. NEAL NIKLAUS  
MR. AND MRS. KEVIN R. NOSE  
MR. AND MRS. JOSH NOWAK  
MR. AND MRS. EDWARD F. NYAHAY  
MR. AND MRS. SCOTT OBOY  
MR. AND MRS. MICHAEL J. O'DEA  
MS. CATHERINE OLOHAN  
MR. AND MRS. TERRENCE E. OLOUGHLIN  
MR. AND MRS. CARL OLSON  
MR. AND MRS. THOMAS G. O'NEIL  
MR. AND MRS. PATRICK J. O'REILLY  
MS. SHIRLEY PALUMBO  
MR. MICHAEL PERRINE  
MR. AND MRS. BRADLEY M. PETERSON  
MR. AND MRS. ROBERT K. PETERSON  
MR. AND MRS. RICHARD C. PFEIFFER JR.  
MR. AND MRS. KENNETH M. PILLOVANT  
PLANK LAW FIRM, LPA  
MR. AND MRS. CHRISTOPHER PLATEK  
MR. AND MRS. FRANK A. PLESCIA  
MR. AND MRS. DONALD E. POSTIY  
MS. JOY L. PRATT  
MR. AND MRS. THOMAS A. PRESTON  
MS. AUTUMN PURDY  
MS. COURTNEY QUINTOS  
MR. NORMAN H. RECLA  
REVEREND MR. AND MRS. CHRIS REIS  
MS. KATHRYN A. REISCH  
MR. JAMES RENARD  
RICHARDS MOVING & STORAGE, INC.  
MR. AND MRS. DOUG RICHARDS

MR. AND MRS. RANDAL J. RICHARDSON  
MR. AND MRS. HAROLD E. RIDENOUR  
MR. AND MRS. NOLAN J. RINDFLEISCH  
MR. AND MRS. CONRAD L. RINTO  
MR. AND MRS. DOUGLAS RITCHEY  
ROBINSON & TURLEY  
MR. JAMES ROOF  
MR. AND MRS. RONALD J. ROSS SR.  
MR. AND MRS. MARK R. ROWLAND  
MR. AND MRS. ROBERT E. RYAN  
MR. KERRY SANDBERG  
MR. AND MRS. LEROY E. SANOR  
MR. MONTY D. SAYERS JR.  
REVEREND DAVID A. SCHALK  
MS. SELORA SCHLINGMAN  
MR. AND MRS. PETER J. SCHLOM  
MS. JUDITH A. SCHLUETER  
MR. AND MRS. DAVID E. SCHOTT  
SCHOTTENSTEIN HOMES, LLC  
MR. AND MRS. WILLIAM M. SCHULTZ  
MR. AND MRS. MICHAEL A. SCIARRONI  
SERRA CLUB OF COLUMBUS  
SERRA CLUB OF NORTH COLUMBUS  
MR. JOHN C. SHANKS JR.  
MR. AND MRS. DAVID W. SHAVER  
MR. AND MRS. ED SHEEHAN  
MS. M. SUE SHONK  
MS. MARGARET D. SHORT  
MRS. DONNA SHOVER  
MS. KATHLEEN S. SIBLEY  
MS. SYLVIA J. SIEMER  
MR. AND MRS. ROD SMITH  
MR. AND MRS. WILLIAM SMITTLE  
MR. AND MRS. JONATHAN E. SORG  
ST. JOSEPH CATHEDRAL  
ST. JOSEPH PARISH  
MR. AND MRS. STEVEN R. STACK  
MR. AND MRS. CHARLES R. STALTER JR.  
STATE TEACHERS RETIREMENT SYSTEM OF OHIO  
MR. TIMOTHY W. STEPHENS  
MS. JEWYL STEVENS

MS. JEANNE M. STOKER  
MR. RON E. STONE  
MR. AND MRS. JEFFREY S. STOUFFER  
MS. LYDIA R. STREHL  
MS. DAPHNE SUH  
MR. AND MRS. JOSEPH P. SWEENEY  
MR. AND MRS. DAVID A. SYBERT  
MR. AND MRS. RALPH TALLARICO  
TALON TITLE AGENCY LLC  
MR. ROBERT TATZ  
MS. MARY H. TAYLOR  
MR. AND MRS. PAUL TAYLOR  
MR. AND MRS. ROBERT A. TEMPLETON  
MR. DANIEL THIMONS  
DR. AND MRS. MARK E. THOMPSON  
MR. AND MRS. WILLIAM TOH  
MS. CHRISTINA A. TOUTANT  
REVEREND JOSEPH J. TRAPP II  
TRUCCO CONSTRUCTION COMPANY, INC.  
MR. AND MRS. JAMES J. ULRICH  
MR. AND MRS. JOEL E. URBANY  
MR. AND MRS. GEORGE A. VAIS  
MS. MICHELE R. VAN HOUTEN  
MR. WILLIAM D. VAN HUFFEL  
MS. PHYLLIS K. VANARSDALE  
MR. RICHARD VARAGLIOTTI  
MR. AND MRS. LAWRENCE A. VENSIL  
MR. GEORGE VICTORY  
MR. AND MRS. JAMES S. VINCENT  
MR. AND MRS. PETE VRONA  
MR. JASON WALDEN  
MR. AND MRS. PETER M. WALKER  
MR. AND MRS. RICHARD WARTEL  
MS. MARY BETH WEISNER  
MR. AND MRS. WILLIAM L. WELCH  
MR. AND MRS. MICHAEL A. WELLING  
MR. AND MRS. TIMOTHY W. WELSH  
MS. GINGER WEST  
MR. AND MRS. JAMES F. WHALEN  
MR. AND MRS. CHARLES E. WHITE  
MR. AND MRS. BRIAN S. WILCOX  
MR. AND MRS. PAUL R. WILLS

# DONORS

REVEREND MR. AND MRS. LARRY WILSON  
 MR. AND MRS. MARTIN WILT  
 MR. DOUGLAS D. WINBIGLER  
 MRS. AMELIA WINCHESTER  
 MS. MARY ANN WINFIELD  
 MR. LUKE WOODS  
 MS. CATHERINE WRIGHT  
 MS. MARGARET WRIGHT  
 MR. AND MRS. JOHN A. WYMAN  
 MS. MARY IRENE YOUNKIN  
 MR. AND MRS. RONALD P. YOUNKIN  
 MR. AND MRS. JOHN J. ZETTLER  
 MR. AND MRS. MARK J. ZIMMER  
 MS. JENNA ZINS  
 MR. AND MRS. WILLIAM P. ZOZ

MS. ELLEN BERRY  
 MR. AND MRS. WILLIAM B. BIGELOW  
 MR. AND MRS. FRANK BLATERI  
 MR. AND MRS. MARK V. BOFFO  
 MR. AND MRS. ROBERT J. BORTON  
 MR. AND MRS. MICHAEL J. BOWMAN  
 MR. AND MRS. EDWARD J. BRACKEN  
 MR. AND MRS. JOHN BRADDY  
 MR. ALLYN BREHL  
 MR. AND MRS. DAVID J. BREHM  
 MS. SAUNDRA BRENNAN  
 MR. AND MRS. DAVID BRESNEN  
 MR. AND MRS. THOMAS M. BRO  
 MR. AND MRS. WILLIAM BROUGHMAN  
 MR. RICHARD BUJALSKI  
 MS. NANCY A. BUONI  
 MR. AND MRS. ROBERT BURGMAN  
 MR. AND MRS. STEVEN C. BURNS  
 MR. AND MRS. HUGH G. BUSH  
 MS. NANCY H. BUSH  
 MR. AND MRS. JAMES R. BYRUM  
 MR. AND MRS. JOHN W. CAHILL  
 MR. AND MRS. JOHN A. CALLAHAN  
 MR. AND MRS. LEON K. CAMERLENGO  
 MR. AND MRS. RUSSELL L. CAMFIELD JR.  
 MR. AND MRS. STEPHEN CAPLINGER  
 MR. AND MRS. ANTONIO CAPOCCIA  
 MR. HARRY CARDILLO  
 MR. AND MRS. VICTOR CARMONA  
 MR. FRANK CASE  
 MR. AND MRS. DANIEL CATERINICCHIA  
 CATHOLIC DIOCESE OF CLEVELAND  
 MS. TINA M. CEGALA  
 MR. AND MRS. ANTHONY J. CERITELLI  
 MS. ELIZABETH CHANDLER  
 MR. AND MRS. JOHN M. CHAPIN  
 MR. AARON CHRISTY  
 MS. MARY M. CLARK-SMITH  
 MS. SARA CLELAND  
 MR. AND MRS. ROBERT E. CLUM JR.  
 MS. PATRICIA COGLIANESE  
 MR. AND MRS. TED A. COLLINS

MR. AND MRS. SHAWN P. COMBS  
 MR. AND MS. JEFFREY CONLEY  
 MS. ANN CONNOR  
 MR. JOHN R. CORVO  
 MR. AND MRS. MICHAEL COUCHMAN  
 MS. MARIA R. COUREY  
 MR. AND MRS. TIMOTHY R. COWEN  
 MR. AND MRS. THOMAS CRAFT  
 MR. AND MRS. HERMAN CRAWFORD  
 MR. AND MRS. ROBERT CURTIS  
 MS. JAMIE CZETWERTYNSKI  
 MR. AND MRS. CRISTINO P. DAMO  
 MR. AND MRS. JEFFREY A. DANIELS  
 MR. AND MRS. DANNY DAVIS  
 MR. ROBERT L. DAVIS  
 MR. AND MRS. PAUL J. DE COSTE  
 MR. AND MRS. MATTHEW DEAL  
 MR. AND MRS. JAMES D. DEBUS  
 MRS. NORMA D. DEFRAK  
 MR. AND MRS. JAMES F. DIETZ  
 MS. ANN JANE DOBRY  
 MR. AND MRS. JACOB S. DORAN  
 MR. AND MRS. WILLIAM P. DOTZAUER  
 MR. AND MRS. MICHAEL DUDLEY  
 MR. JACOB DUMMERMUTH  
 MR. AND MRS. DAVID DUNBAR  
 MRS. OPLE J. DUNDON  
 MR. AND MRS. MIKE DUNKLE  
 MR. AND MRS. JOSEPH E. DURY  
 MR. AND MRS. BRYAN ELGES  
 MR. AND MRS. MEREDITH ENGLEHART  
 REVEREND MONSIGNOR PAUL P. ENKE  
 MR. AND MRS. ROGER E. ESCOLAS  
 MS. ROSE M. FANCELLI  
 MR. ADAM FAULKNER  
 MR. AND MRS. JOHN K. FAVALE  
 MS. ROSEMARY FEKA  
 MR. AND MRS. KEVIN T. FENLON  
 MR. AND MRS. JAMES J. FILICHA  
 MS. JULIA A. FIX  
 MS. DEBORAH J. FLEMING  
 MR. AND MRS. BRIAN FORTMAN

MS. MARY SUSAN FORTUNATO  
 MS. SUE FORTUNATO  
 MR. AND MRS. JAMES W. FOSTER  
 MR. AND MRS. GREGORY J. FRANCE  
 MS. LISA K. FRENCH  
 MR. AND MRS. ROBERT A. FRESCO  
 MR. AND MRS. BRANDON FRIESS  
 MR. DOMINIC FRISSORA  
 MR. AND MRS. JOSEPH FRISSORA  
 MR. JOHN I. GAHM  
 MS. HELEN GALLAGHER  
 MR. JOSEPH R. GALLAGHER  
 MR. AND MRS. KEVIN P. GALLAGHER  
 MR. AND MRS. JOHN P. GANNON  
 MR. AND MRS. DALE GANOBISK  
 MS. BARBRA J. GANT  
 MR. MONTSERRAT R. GARCIA  
 DR. JOHN J. GARY  
 MS. GRACE GAVIN  
 MR. AND MRS. PAUL GEIGER  
 MR. AND MRS. JULIUS GERSI  
 MR. AND MRS. JON L. GIACOMIN  
 MR. AND MRS. GEORGE GIBSON  
 MR. AND MRS. JERRY B. GIBSON  
 MR. AND MRS. ROSS J. GIGLIOTTI  
 MR. AND MRS. THOMAS A. GJOSTEIN  
 MR. AND MRS. RAYO R. GLADBACK  
 MS. MARIE GOCKENBACH  
 MR. AND MRS. THOMAS C. GRAY  
 MR. AND MRS. JOHN GREVE  
 MR. AND MRS. DONALD H. GRIFFIN  
 MR. AND MRS. MITCHELL P. GRINDLEY  
 MR. AND MRS. GEORGE GROOM  
 MR. VICTOR GROSS  
 MR. DAN GUAPPONE  
 MS. JANE A. GUGGENBILLER  
 MR. AND MRS. BRIAN HALL  
 MR. AND MRS. MICHAEL R. HALL  
 MS. GEMMA MARIE C. HANSON  
 MR. RICHARD T. HARRIS  
 MR. BURKE HEALEY  
 MR. AND MRS. MICHAEL T. HEALY

MS. ELIZABETH HERMSEN  
 MS. MARY ANN HICKS  
 MS. CATHERINE M. HIGGINS  
 MR. AND MRS. RALPH M. HINTON  
 MS. MARY ANN HOBART  
 MS. MAUREEN HOFFMAN  
 MR. AND MRS. MIKE HOLDCROFT  
 MR. AND MRS. JOHN J. HOLLERN  
 MS. MAURA HOLLOWCHAK  
 MR. AND MRS. EDWARD R. HOLT JR.  
 MR. AND MRS. SAMUEL B. HOLTON  
 MS. SUSAN A. HUPP  
 INFUSION DANCE, LLC  
 MRS. MARIAN L. IRWIN  
 MS. KATHRYN A. JAKES  
 MR. AND MRS. ALEX L. JAMIESON  
 MR. MICHAEL A. JASIEWICZ  
 MS. BARBARA A. JELINEK  
 MR. ANDY JOHNS  
 REVEREND MR. AND MRS. THOMAS JOHNSTON  
 MS. MICHELLE JOLLEY  
 MS. CLAUDIA G. JONES  
 MS. DENIS JONES  
 MR. AND MRS. ROBERT JONES  
 MR. AND MRS. ROY JORDAN  
 MS. MAUREEN L. JUDSON  
 MR. CHRISTOPHER KADUSKY  
 MR. AND MRS. ROBERT J. KAISING  
 MS. REBECCA B. KAMINSKY  
 MR. AND MRS. MARK E. KELLEY  
 MS. MARY D. KELLEY  
 MR. AND MRS. DONALD C. KELLY  
 MR. AND MRS. DONALD C. KERN  
 MR. AND MRS. PHILIP J. KERN  
 MS. DAWN KIBLER  
 MR. AND MRS. CARL L. KIEFFER  
 MS. DOLORES KIRK  
 MR. AND MRS. EDWARD J. KISTNER  
 MS. LINDA B. KLAYMAN  
 MR. AND MRS. KEVIN KOEHLER  
 MR. AND MRS. DANIEL KOONS



MS. ABRA ABBEY  
 MS. KATHLEEN A. ADAMS  
 MR. AND MRS. TODD A. ADAMS  
 MR. AND MRS. WILLIAM ADAMS  
 MR. AND MRS. KIRK A. ADLER  
 MR. AND MRS. NICK ALBANESE  
 MS. CAROLYN A. ALLEN  
 MR. AND MRS. EDWARD AMBROSE  
 MR. AND MRS. HENRY A. ARNETT  
 MR. AND MRS. PATRICK ARNETT  
 MR. GEORGE J. ARNOLD  
 MS. MARY E. BAILEY  
 MR. AND MRS. JEFF S. BAKER  
 MS. VIRGINIA E. BALL  
 MS. CAROLE T. BARTLETT  
 MR. AND MRS. DICK BARTZ  
 MR. AND MRS. ROBERT BEACOM  
 MR. AND MRS. CALVIN C. BECK  
 MR. AND MRS. EDGAR BEGAZO  
 MR. AND MRS. DARRELL L. BENEDETTI  
 MR. AND MRS. LEONARD BERGLUND JR.  
 MS. ASHLEY BERGMAN

## DONORS

Mrs. Nancy Kortu  
Ms. Katelyn Kufahl  
Mr. and Mrs. Sinan M. Kutla  
Mr. and Mrs. Todd J. Kyle  
Ms. Joann La Porta  
Reverend Mr. and Mrs. Peter C. Labita  
Ms. Cynthia A. Lane  
LaoH  
Dr. John B. Lasekan  
Mr. and Mrs. Vergel Lattimore  
Mr. E.R. Layao  
Mr. and Mrs. Mickey Lennon  
Mrs. Mary J. Leonard  
Mr. and Mrs. Jeremy Letzelter  
Mr. and Mrs. Arthur Levy  
Mr. and Mrs. Herbert W. Ligocki  
Mr. and Mrs. Dale J. Linebaugh  
Dr. Thomas A. Lisk and Mrs. Lorna M. Millan Lisk  
Mr. John L. Longstreth  
Ms. Kimberly Luker  
Ms. Mary Luketich  
Ms. Doris Machinsky  
Mr. Stanley Machinsky Jr.  
Ms Gail M. Maier  
Ms. Rita D. Maille  
Mr. and Mrs. Anthony J. Mangino  
Ms. Marguerite J. Marshall  
Mr. and Mrs. Douglas J. Martin  
Ms. Lynatte Mashingaidze  
Mrs. Philomena Mastroveincenzo  
Mr. and Mrs. Nicholas Masucci  
Mr. and Mrs. Raymond W. Maurer  
Mr. and Mrs. Michael J. McCabe  
Mr. Joseph E. McGarry and Mrs. Carmina V. Vitullo  
Ms. Wendy L. McGarvey  
Ms. M. Julie McGhee  
Dr. I. Lee McPhil  
Measurement Computing Corporation  
Mr. and Mrs. David E. Melfi

Mr. and Mrs. Scott R. Mergenthaler  
Mr. and Mrs. Thomas J. Messina  
Mr. and Mrs. John R. Meyer  
Mile High United Way  
Mr. and Mrs. Albert A. Miller III  
Mr. and Mrs. Jeffrey L. Miller  
Mr. Thomas E. Mitchell  
Mr. and Mrs. William H. Mitchell  
Mr. and Mrs. David W. Mobley  
Ms. Mary Ellen Morris  
Ms. Lois E. Morrison  
Ms. Pamela A. Mortimer  
Mr. and Mrs. John Mulach  
Mr. and Mrs. Michael G. Mulligan  
Dr. and Mrs. Alan J. Murnane  
Mr. and Mrs. Michael R. Murray  
Mr. and Mrs. Edward F. Murtha  
Mr. James L. Myers  
Mr. and Mrs. Michael T. Neel  
Ms. Mary Nephew  
Mr. and Mrs. William F. Newman  
Ms. Elizabeth J. Noon  
Ms. Martha W. Nowlin  
Mrs. Nancy A. O'Connor  
Mr. and Mrs. Clifford W. Oiler  
Mr. and Mrs. Joseph O'Keefe  
Mr. and Mrs. Brian D. O'Reilly  
Mrs. Irene Orlaska  
Mr. and Mrs. Timothy J. Owens  
Mr. and Mrs. Solomon Pandian  
Mr. and Mrs. Andrew J. Paskell  
Mr. and Mrs. Vincent Pelino  
Mr. and Mrs. Anthony E. Petrarca  
Mr. and Mrs. Philip A. Petrosky  
Mr. and Mrs. John M. Pigos  
Planks Cafe Inc.  
Mr. and Mrs. Richard Poppa  
Mr. and Mrs. Torrance Powell  
Mr. and Mrs. Andre P. Prenoveau  
Mr. and Mrs. Mark J. Preteroti  
Mr. and Mrs. Michael Priess  
Ms. Colleen Priest

Mr. and Mrs. Jerry Princehorn  
Mr. and Mrs. John Pusateri  
Mr. and Mrs. Tony J. Pusateri  
Mr. and Mrs. Edward L. Quinn  
Ms. Amber Ramirez  
Mr. and Mrs. Victor H. Ramirez  
Mr. and Mrs. Michael Rausch  
Reverend Mr. and Mrs. Hector J. Raymond  
Mr. and Mrs. H. Paul Reed  
Mr. Ronald J. Reichley  
Ms. Martha Jane Rhoades  
Ms. Pamela S. Rhoades  
Mr. and Mrs. Christopher M. Ricevuto  
Mr. and Mrs. Frederick P. Rieser Sr.  
Ms. Anna Marie Robinson  
Mr. Russell T. Rogers  
Mr. and Mrs. Kevin Ronnebaum  
Mr. and Mrs. Patrick D. Rossetti  
Ms. Nancy Rossi  
Ms. Mary Rose Rubeck  
Mr. and Mrs. Kenneth F. Rupp III  
Mr. Charles Russell  
Ms. Patricia A. Russell  
Ms. Anne Russo  
Ms. Renata F. Russo  
Ms. H. Stephanie Sanchez  
Mr. and Mrs. Harry Savas  
Mr. and Mrs. Kurt J. Schilder  
Mr. Jerome R. Schindler  
Mr. and Mrs. Daniel F. Schlitt  
Mr. and Mrs. Fred J. Schmiieder  
Mr. and Mrs. Thomas F. Schmitt  
Mr. and Mrs. Kevin D. Schoedinger  
Mr. and Mrs. Frederick D. Schoen  
Ms. Marie Schwinne  
Mr. and Mrs. Ralph Sedlock  
Mr. and Mrs. Ralph Selhorst  
Ms. Karen Sessis  
Mr. and Mrs. Daniel M. Shakal  
Mr. Roger Sharp

Mrs. Merdene Shaw  
Mr. Daniel F. Shields Jr.  
Mr. and Mrs. Russell B. Shields  
Ms. Susan E. Silva  
Mr. and Mrs. Edward N. Slack  
Ms. Brenda G. Smith  
Mr. and Mrs. Byron Smith  
Mr. Kenneth J. Smith  
Mr. and Mrs. M. Lewis Smith  
Mr. and Mrs. Jimmy J. Snelling  
Mr. and Mrs. John G. Snyder  
Mr. and Mrs. James J. Sommer  
South Carolina Wind and Hail Underwriting Association  
Mr. and Mrs. Gregory J. Speicher  
Ms. Emily Ssweajje  
St. Ann Parish  
St. Joseph Parish  
St. Patrick Parish  
St. Paul's Outreach  
Mr. Brian R. Stevenson  
Mr. and Mrs. Michael Stone  
Ms. Elizabeth Stull  
Mr. and Mrs. James L. Stumph  
Mr. and Mrs. John T. Sugden  
Ms. Loretta A. Swanson  
Mr. and Mrs. Jeffrey Swartz  
Ms. Margaret E. Tabit  
Mr. Jeremy Tancredi  
Ms. Grace Taylor  
Mr. and Mrs. Armando Tempesta  
Mr. and Mrs. Jerry Teresk  
Ms. Alice J. Thompson  
Mr. and Mrs. Scott Thorne  
Ms. Nancy J. Thornton  
Mr. and Mrs. Lawrence Tornes  
Mrs. and Ms. Troy Toulouse  
Ms. Joanne Trabold  
Mr. and Mrs. Robert H. Trisket  
Mr. and Mrs. Michael Tuffey  
Mr. and Mrs. Richard Turner  
Ms. Beth Vanderkooi

Ms. Patrice A. Vincent  
Mr. and Mrs. Vuong Vo  
Mr. James M. Vonau  
Mr. Michael A. Ward  
Mr. Tom Weikart  
Ms. Bianca Whalen  
Ms. Ann Whiteman  
Mr. Ivan Whiting  
Ms. Catherine M. Wickert  
Mr. and Mrs. James R. Willett  
Mr. and Mrs. James K. Williams III  
Ms. Connie Wilson  
Mr. and Mrs. Jesse B. Wilson Jr.  
Ms. Carey Wrigley  
Mr. Evan Yakubov  
Mr. and Mrs. Peter B. Yeldell  
Mr. and Mrs. Joseph A. Zaremba  
Ms. Veronica Zatezalo  
Mr. and Mrs. Harold J. Zimmer

# KYRIE BEQUEST SOCIETY



## THE KYRIE BEQUEST SOCIETY HONORS THOSE WHO REMEMBER OUR CATHOLIC FAITH IN THEIR ESTATE PLANS

The Catholic Foundation can help you build charitable giving into your estate plans to help you achieve tax advantages and leave an everlasting legacy to your parish, school or favorite Catholic ministry. Individuals often choose to designate a Catholic Foundation fund as the beneficiary of a will, life insurance plan, pension plan or retirement account (such as an IRA).

Members of the Kyrie Bequest Society gather annually for Mass and a luncheon. To learn more about joining the Kyrie Bequest Society, please call 614-443-8893.

Mr. and Mrs. Adam Bangert, Jr.  
Mr. and Mrs. Leonard W. Barbe  
Mr. and Mrs. Colin E. Bayliss  
Mr. and Mrs. D. Peter Beirne, Jr.  
Mr. and Mrs. Gregory J. Berning  
Mr. and Mrs. Joseph M. Berwanger  
Mr. Erroll † and Mrs. Mabell Black  
Mr. and Mrs. Dennis C. Bockus  
Reverend Monsignor Anthony Borrelli †  
Mr. James and Mrs. Anne † Bownas  
Mr. Allyn Brehl  
Mr. and Mrs. Richard E. Brehm  
Mr. Charles W. Brown  
Ms. Mary C. Brune  
Mrs. Mary Ann Burke †  
Mr. and Mrs. Edward Burkey  
Mr. and Mrs. Daniel T. Burkhart  
Dr. Richard and Mrs. Patricia † Carr  
Mrs. Dorothy Carroll  
Mr. and Mrs. Francis Carroll  
Ms. Elenor M. Catalina †  
Ms. Genevieve S. Chamblin †  
Mr. Edward † and Mrs. Bonnie L. Chuha  
Mr. and Mrs. James F. Coffey  
Estate of Reverend William J. Connor  
Estate of Reverend Francis Connor  
Ms. Carol Connors  
Mr. and Mrs. James R. Cooper  
Ms. Erin L. Cordle  
Mr. Paul A. Crowley  
Mr. and Mrs. Michael Curtin  
Mr. Frank J. Damian †  
Mr. and Mrs. J. Brewster †  
Mr. Sam Dennis  
Mr. Thomas † and Mrs. Mary Ann Denton  
Mr. and Mrs. John Dete  
Mr. and Mrs. Raymond Devine †  
Mr. Robert Dowd †  
Ms. Betty Eagle  
Mr. and Mrs. Thomas L. Easley  
Ms. Mildred Egner †  
Mr. and Mrs. Richard J. Emig †  
Reverend Richard F. Engle  
Mr. and Mrs. Gary Fay  
Mr. and Mrs. Patrick J. Fehring, Jr.  
Mr. John Fiano †  
Mr. Fred and Mrs. Molly Caren † Fisher  
Dr. Jacob and Mrs. Joyce † Froning  
Mr. John † and Mrs. Jean Fry  
Mrs. Eileen Funk  
Mr. and Mrs. David Garick  
Reverend Robert E. Gately †  
Reverend Monsignor James A. Geiger  
Mr. William J. Geiszler Jr.  
Mr. George A. Gillig  
Mr. and Mrs. Andrew M. Glockner  
Dr. Edmond J. Goold †

Mr. and Mrs. Timothy Gose  
Most Reverend James A. Griffin, J.D., J.C.L.  
Mr. and Mrs. Allen Griffin †  
Mr. Leo Grimes  
Reverend Monsignor Kenneth F. Grimes †  
Mr. and Mrs. John M. Haemmerle  
Mr. Lawrence H. Halter Jr.  
Reverend Mark J. Hammond  
Mr. and Mrs. Marc C. Hawk  
Reverend Monsignor Joseph M. Hendricks  
Mr. and Mrs. Craig A. Heppner  
Reverend Mr. George † and Mrs. Gloria Horsley  
Dr. Marcel † and Mrs. Edith Hundziak  
Mr. and Mrs. John B. Igel  
Mr. Vernon T. Jones  
Mr. and Mrs. Frank K. Kam  
Mr. and Mrs. Robert Kauffman  
Mr. John L. Kaufman  
Ms. Irene Kelleher †  
Mr. and Mrs. James M. Kennedy  
Ms. Jo Ann Kennedy  
Reverend Monsignor Edward L. Kessler †  
Mrs. Elizabeth Kidwell †  
Mr. and Mrs. Edward J. Kistner  
Mr. Marion Klocki †  
Ms. Trudy Kozad †  
Mr. and Mrs. Raymond E. Kreber, Jr.  
Mr. and Mrs. Gerald L. Krumdieck  
Mr. George W. Landrum †  
Ms. Ruth E. Lang †  
Ms. Patricia Lawlor †  
Dr. Thomas A. Lisk and Mrs. Lorna M. Millan Lisk  
Mr. Terrence † and Mrs. Jodelle Lorenz  
Mr. F. Michael Lorz APR  
Mr. and Mrs. James Mahoney †  
Mr. Thomas J. Maloney †  
Mr. and Mrs. Robert E. Manion †  
Mr. Gerald O. Martin  
Mr. and Mrs. Thomas D. McAuliffe  
Reverend Bernard J. McClory  
Mr. Ora R. Fry, III and Ms. Joanne E. McGuire  
Reverend Monsignor Frank J. Meagher  
Mr. and Mrs. Thomas Merry  
Mr. and Mrs. Joseph A. Metzger  
Ms. Dorothy J. Miesse  
Ms. Marie L. Miesse †  
Mr. John H. Miller  
Mr. and Mrs. J. Craig Mohre  
Mr. and Mrs. Eric Mondene  
Mr. Alan K. Mooney  
Ms. Dorothy H. Mooney †  
Mr. and Mrs. Robert H. Morosky  
Reverend Monsignor Robert L. Noon  
Mr. and Mrs. Tom O'Keefe †  
Mr. Richard † and Mrs. Norma O'Neil  
Reverend James Ogurchock  
Mr. and Mrs. Robert D. Owens

Mr. and Mrs. Matthew D. Palmer  
Ms. Regina Parks  
Mr. and Mrs. Joseph J. Patrick, Jr.  
Mr. and Mrs. Frank A. Plescia  
Reverend Mr. and Mrs. Donald A. Poirier  
Mr. and Mrs. Dominic W. Prunte  
Mrs. Jenifer Rasor  
Mrs. Jean Reas  
Reverend J. Lawrence Reichert  
Mrs. Joanne Layman Richards †  
Ms. Magdaline Rieser †  
Mr. John R. Roach  
Mr. and Mrs. Donald J. Rose  
Mr. and Mrs. Charles G. Rowan  
Mr. Mark Rubeck  
Mrs. Patricia Rubeck †  
Mrs. Virginia L. Ruppeck †  
Mr. James P. Ryan  
Ms. Mary Louise Sabatino  
Mr. John † and Mrs. Connie Sauter  
Mr. Tony Scartz  
Mr. and Dr. David Schiele  
Reverend David M. Schilder  
Reverend Monsignor Robert E. Schneider  
Reverend Monsignor Mario A. Serraglio  
Ms. Josephine M. Shaffer †  
Mr. Walter † and Mrs. Rita Siemer  
Reverend Theodore K. Sill  
Mr. and Mrs. Richard H. Sill †  
Ms. Helen Slack †  
Ms. Molly E. Snyder  
Mr. and Mrs. Andrew J. Sonderman  
Reverend Monsignor Edward F. Spiers †  
Mr. Richard L. Spires  
Mr. and Mrs. Charles R. Stalter Jr.  
Dr. Thomas E. Stenger  
Mr. Ralph † and Mrs. Ruth Streng  
Mr. Ron Sullivan †  
Ms. Marilyn Thomas  
Mr. Charles and Mrs. Mary † Trivisonno  
Mr. and Mrs. George G. Vargo  
Mr. and Mrs. Matthew Vitartas  
Mr. and Mrs. James M. Vonau  
Mr. Thomas P. Wagoner  
Ms. Ginger West  
Mr. and Mrs. R. Patrick West †  
Ms. Lois Westfall  
Mr. and Mrs. Jerome M. Wiggins  
Mr. Jacob L. Will †  
Mr. Craig N. Willett  
Mr. Edgar and Mrs. Alice † Willig  
Reverend Monsignor John V. Wolf STD †  
Mrs. Nellie Wolfe †  
Reverend David E. Young

† Deceased



---

## PROFESSIONAL ADVISOR GROUP

Mr. Robert H. Albert  
Ms. Mary M. Albright  
Mr. James Atkinson  
Mrs. Kathleen Ballenger  
Mr. Leonard W. Barbe  
Ms. Victoria F. Beale  
Ms. Erin Bishop  
Mr. James Bishop  
Mr. Merle Bowling  
Mr. James H. Bownas  
Ms. Kristina L. Boynton Acklin  
Mr. Daniel E. Bringardner  
Ms. Suzanne Galyardt  
Mr. Richard D. Bringardner  
Mr. J. Randolph Burchfield  
Mr. Shamus Cassidy  
Ms. Meredith K. Knueve  
Mr. John Davidson  
Mrs. Candace DeLuca  
Mr. Steve Devlin  
Mr. Robert R. Dunn  
Mr. Robert J. Eyen  
Mr. Matthew C. Faehnle  
Mr. Michael P. Fisher  
Mr. James Flaherty  
Mr. Conor Flanagan  
Mr. Michael V. Foley  
Mr. Jack Frencho  
Mr. Timothy M. Frericks  
Mr. Daniel Rohletter  
Ms. Jessa M. Gary  
Ms. Linda Gause  
Mr. Bradley R. Glover  
Ms. Sandra L. Grant  
Mr. Ronald J. Hagan  
Ms. Erika Haupt  
Mr. Jonathon Yerian  
Mr. Jeffrey Hedley  
Ms. Kathy Houck  
Mr. Damon P. Howarth  
Ms. Shanna Huber  
Mr. David L. Humphrey  
Mr. Liam Hurley  
Mr. Ted Inbusch  
Mr. Douglas R. Jackson  
Mr. Kevin Kale

Mrs. Julie Keckstein  
Mr. Joseph E. Kohler  
Mr. Dan Lacey  
Mr. Jon P. LaFramboise  
Mr. Brian T. Loe  
Mr. John C. Lucas Esq.  
Mr. Jack Malone  
Ms. Jane Higgins Marx  
Mr. Timothy J. McGrath  
Mr. John McHugh  
Mr. William J. McLoughlin  
Mr. Steven D. Meier  
Ms. Nikki Mesnard  
Mr. Tim Michaels  
Mr. Christopher H. Moran  
Ms. Jen Myers  
Mr. William F. Newman  
Ms. Kelly Curtin Noll  
Mr. Kevin R. Nose  
Mr. Joel Oles  
Mr. Stephen E. Proctor  
Mr. Robert Rafferty  
Mr. Joe Reardon  
Mr. Mark Reitz  
Mr. Daniel B. Roe CFP  
Mr. Chuck Rolph  
Mr. Ronald L. Rowland  
Mr. John C. Ryan, Jr.  
Mr. Steven J. Shadeed  
Mr. Marc D. Smith  
Mr. John F. Stock  
Mrs. Michelle K. Stroh  
Mr. David Swift  
Mr. Paul Vitartas  
Mr. James M. Vonau  
Mr. Christopher Vonau  
Mr. Edward T. Wandtke  
Ms. Joyce Waters  
Ms. Kaye P. Willi



---

## PASTORS ADVISORY COUNCIL

Reverend James Black  
Reverend Monsignor John Cody  
Reverend Jeffrey Coning

Reverend Leo Connolly II  
Reverend Anthony Dinovo  
Reverend Donald Franks  
Reverend Peter Gideon  
Reverend Mark Hammond  
Reverend Matthew Hoover  
Reverend Daniel Millisor  
Reverend Monsignor Stephan Moloney  
Reverend Michael Nimocks  
Reverend Theodore Sill  
Reverend David Sizemore  
Reverend Mark Summers  
Reverend Michael Watson  
Reverend Jonathon Wilson  
Reverend David J. Young



---

## THE MARTHAS

Mrs. Mary Ann Abrams  
Mrs. Mary K. Anderson  
Ms. Beth A. Atkinson  
Mrs. Lisa M. Barlage  
Ms. Diane B. Barnes  
Mrs. Rita A. Bauer  
Ms. Laura S. Benton  
Mrs. Michelle Biagi  
Mrs. Sharon B. Bockus  
Ms. Debra Boehmler  
Ms. Ashley Borgemenke  
Mrs. Patience K. Bowman  
Mrs. Kathie M. Bowman  
Mrs. Laura E. Bradford  
Mrs. Venetia Bramlage  
Mrs. G. Jeanne Braxton  
Ms. Bonnie B. Brown  
Mrs. Stacey A. Brown  
Mrs. Kim M. Brown  
Mrs. Lori Caldwell  
Mrs. Maggie Capretta  
Mrs. Jo Ann Carpenter  
Ms. Deborah A. Coleman  
Mrs. Georgine S. Collette  
Ms. Erin L. Cordle  
Mrs. Bridgit M. Denz  
Ms. Rachel L. Denz  
Mrs. Patience G. Denz  
Mrs. Mary E. Dodd  
Mrs. Julia L. Dorrian  
Ms. Karen Eramo

Ms. Mary Filice  
Mrs. Lauren N. Fromme  
Mrs. Suzanne R. Galyardt  
Mrs. Kathleen L. Gibbons  
Mrs. Susan B. Gill  
Ms. Michelle Graham  
Ms. Sandra L. Grant  
Mrs. Lisa R. Green  
Ms. Patricia M. Green  
Mrs. Lisa Groff  
Ms. Mary V. Hayes  
Mrs. Alice Heller  
Mrs. Monica Henry  
Ms. Michelle Hipsley  
Mrs. Kristine M. Hollern  
Ms. Maura Holowchak  
Mrs. Gloria Horsley  
Ms. Melissa Huff  
Mrs. Dolores F. Igel  
Ms. Kimberly A. Johnson  
Mrs. Julie Keckstein  
Ms. Kristina I. Keller  
Ms. Tina Keller  
Mrs. Mary Ann Kent  
Ms. Susanne T. Kloeb  
Ms. Cathy Knox-Adamczak  
Mrs. Kathleen M. Kohler  
Mrs. Moira C. Landes  
Ms. Roberta B. Lehman  
Ms. Subha Lembach  
Ms. Susan B. Lowis  
Mrs. Kambra Malone  
Ms. Melanie A. Marshall  
Mrs. Mary Anne Martin  
Mrs. Dorothy L. Martin  
Ms. Wendy L. McGarvey  
Ms. Colleen M. Mitchell  
Ms. Gai Thi Nguyen  
Mrs. Kimberly T. Owens  
Mrs. Konna M. Pekarciuk  
Mrs. Deborah D. Perrin  
Mrs. Kathleen A. Petrus  
Ms. Leslie A. Rainer-Way  
Ms. Stephanie Rapp  
Ms. Patricia J. Reynolds  
Mrs. Connie Sauter  
Ms. Mary Schell Winters  
Mrs. Joan S. Schlagheck  
Dr. Marian Schuda  
Ms. Veronica N. Sherman  
Mrs. Melissa R. Stack  
Ms. Brenda Stilgenbauer  
Ms. Erin M. Stitzel  
Ms. Jeannie A. Stouder  
Ms. Mindy E. Sybert  
Ms. Sharon Thomas

Ms. Laura B. Tonkin  
Ms. Marianne Traficant  
Ms. Amy K. Vick  
Mrs. Elizabeth J. Vonau  
Ms. Ginger West  
Ms. Jenifer N. Wilson Surmay  
Ms. Diana Marie Winkler  
Ms. Rachel Wolery  
Mrs. Linda C. Younkin

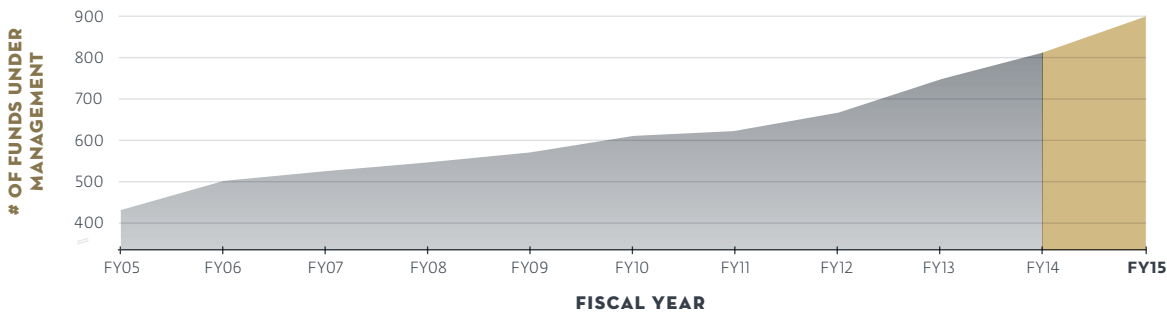
---

## FOUNDERS CIRCLE

Mr. Rita A. Bauer  
Mrs. Ruth Beckman  
Mrs. Laura E. Bradford  
Mrs. Venetia Bramlage  
Mrs. Martha L. Brinkman  
Mrs. Kim M. Brown  
Mrs. Barbara Burke  
Mrs. Lori Caldwell  
Mrs. Jo Ann Carpenter  
Mrs. Michelle Cramer  
Mrs. Sharon M. Curtin  
Mrs. Marie Dawes  
Mrs. Bridgit M. Denz  
Mr. Patience G. Denz  
Mrs. Molly Fanning  
Ms. Margaret Fauth  
Ms. Ann T. Gallagher  
Ms. Mary L. Gallagher  
Mrs. Mimi F. Geswein  
Mrs. Kathleen L. Gibbons  
Dr. Carol Gillespie  
Ms. Sandra L. Grant  
Mrs. Kathleen Gummer  
Ms. Mary V. Hayes  
Mrs. Kathleen M. Houck  
Mrs. Dolores F. Igel  
Mrs. Mary Ann Kent  
Ms. Marie - Joelle C. Khouzam  
Mrs. Brenda Martinez  
Mrs. Frances L. Michalec  
Ms. Patricia Moloney  
Mrs. Deborah D. Perrin  
Ms. Patricia J. Reynolds  
Mrs. Kate Richardson  
Mrs. Barbara Rowland  
Mrs. Connie Sauter  
Dr. Ann E. Schiele  
Mrs. Joan S. Schlagheck  
Mrs. Rosie M. Thomas  
Ms. Sharon Thomas  
Mrs. Linda C. Younkin

## FINANCIALS

	2015	2014
Cash and Cash Equivalents	\$ 6,075,952	\$ 9,516,253
AR and Investment Income Receivable	272,855	91,902
Marketable Securities and Property	140,074,769	133,512,171
Land, Property and Equip Net	5,125,507	4,138,581
<b>TOTAL ASSETS</b>	<b>\$151,549,083</b>	\$ 147,258,907
Accounts and Grants Payable	\$ 397,864	\$ 183,617
Charitable Annuities and Trusts Payable	4,532,414	5,114,728
Agency Funds	102,038,856	100,591,953
<b>TOTAL LIABILITIES</b>	<b>\$106,969,134</b>	\$105,890,298
<b>TOTAL NET ASSETS</b>	<b>\$ 44,579,949</b>	\$ 41,368,609
<b>TOTAL LIABILITIES AND NET ASSETS</b>	<b>\$ 151,549,083</b>	\$ 147,258,907



## OUR PATRON SAINT ST. JOHN FISHER

St. John Fisher was the Bishop of Rochester and Chancellor of Cambridge. He was executed by King Henry VIII for actively opposing the king's divorce and for refusing to take the oath of succession acknowledging Henry as the legitimate heir to the throne. His feast day is June 22.

St. John Fisher was dedicated to the welfare of his diocese and his university. He was named proctor of Cambridge University, and appointed confessor to Lady Margaret Beaufort, mother of Henry VIII. He became closely associated with her endowments at Cambridge, where he also created scholarships, introduced Greek and Hebrew into the curriculum and brought in the world-famous Erasmus as a professor of Divinity and Greek.

St. John Fisher was named the patron saint of The Catholic Foundation by Bishop Campbell.

## FINANCIAL DISCLOSURES

The Foundation of the Catholic Diocese of Columbus (the Foundation) was incorporated in 1985 and organized as an Ohio non-profit corporation. The Foundation's purpose is to receive gifts and bequests and to dedicate their use primarily for religious, educational and charitable activities in connection with and for the benefit of the Roman Catholic Diocese of Columbus. All authority of the Foundation is vested in and exercised by its Board of Trustees.

## ACCOUNTING POLICIES

The financial statements of the Foundation are prepared on the accrual basis of accounting and, accordingly, reflect all significant receivables, payables, and other liabilities. The Foundation is required to report information regarding its financial position and activities according to three classes of net assets: unrestricted net assets, temporarily restricted net assets, and permanently restricted net assets. Temporarily restricted net assets consist of funds restricted by time or purpose by the donors to support program activities. Permanently restricted net assets consist of restricted funds for investment that are to be held in perpetuity with income available to support donor advised and general operating purposes.

## AGENCY FUNDS

The Foundation is required to record contributions from donors for the benefit of a beneficiary specified by the donor as agency funds. The Foundation is the recipient foundation that acts as an agent for a beneficiary if it agrees to solicit assets from potential donors specifically for the beneficiary's use and to distribute those assets or the return from investing those assets to the beneficiary.

## INVESTMENT POOL

The Foundation utilizes a common investment pool to manage most of its investments. The earnings from investments (interest and dividends) as well as investment gains and losses of the pool are allocated to the individual fund according to its percentage of ownership of the investment pool.

## DISTRIBUTION POLICY

The Foundation's distribution policy is to distribute an amount equal to 5% of the average market value over 12 rolling quarters. The policy is reviewed annually by the Board of Trustees.

## ANNUITIES AND CHARITABLE REMAINDER TRUSTS

The Foundation administers various charitable annuity and remainder trust agreements with donors. The arrangements provide for agreed upon distributions over a designated period of time (usually the designated beneficiary's lifetime or a term of years). A liability has been recorded equal to the present value of the estimated future obligation. This obligation amount includes the present value of all anticipated payments to the donors based on their life expectancy or a term of year. The Foundation revalues this liability annually.

## TAX STATUS

The Foundation is a publicly supported charitable organization that is exempt from federal and state taxes under section 501(c)(3) of the Internal Revenue Code.

## AUDITED FINANCIAL STATEMENTS

Audited financial statements are available upon request.  
Prepared by Clark Schaefer Hackett.

## CREDITS

**PHOTOGRAPHY:** Jump Goat Media

**DESIGN:** Matt Pasternack

**CONTRIBUTING WRITER:** Katie Cramer

## OUR STAFF

**TIFFINEY D. HATEM**  
DEVELOPMENT OFFICER

**SARA IRELAND**  
DEVELOPMENT  
COORDINATOR

**AMY PARKER**  
V.P. OF GRANTS MANAGEMENT  
& DIOCESAN PARTNERSHIPS

**LOREN P. BROWN**  
PRESIDENT & C.E.O.

**DANIELLE WYETZEL**  
COORDINATOR FOR  
DEVELOPMENT & GRANTS

**BETSY SEWELL**  
DIRECTOR OF MARKETING & COMMUNICATIONS

**STEVE HAGERDORN**  
C.O.O.

**JAMES A. ANZELMO**  
V.P. OF DEVELOPMENT

**NATALIE MCINTYRE**  
ADMINISTRATIVE COORDINATOR

**CRAIG A. HEPNER, CAP®**  
DEVELOPMENT OFFICER





---

## BOARD OF TRUSTEES

**THOMAS CALDWELL**, *Chair, Our Lady of Perpetual Help, Grove City*

**MICHAEL GAMPP**, *Vice Chair, St. Peter Parish, Columbus*

**JAMES VONAU**, *Secretary, St. Matthew Parish, Gahanna*

**ANDREW WALKER**, *Treasurer, St. Dominic Parish, Columbus*

**STEPHEN DENZ**, *Immediate Past Chair, St. Paul Parish, Westerville*

**MOST REVEREND FREDERICK F. CAMPBELL, D.D., PH. D.**,  
*Bishop of Columbus, St. Joseph Cathedral, Columbus*

**ROBERT MOROSKY**, *Chair Emeritus, St. Joseph Cathedral, Columbus*

**FRANK BUSS**, *Sacred Heart Parish, New Philadelphia*

**REVEREND JAMES BLACK**, *St. Joan of Arc Parish, Powell*

**PETER CIMBOLIC, PH.D.**, *Church of the Resurrection Parish, New Albany*

**MICHELLE CRAMER**, *St. Brigid of Kildare Parish, Dublin*

**LUCONDA DAGER**, *St. Vincent de Paul Parish, Mt. Vernon*

**JUDGE JULIA DORRIAN**, *Immaculate Conception Parish, Columbus*

**DR. TIMOTHY GARNER**, *St. Mary Parish, Marion*

**MIKE HALLER**, *St. Mary Parish, Chillicothe*

**JEFFREY HEDLEY**, *St. Mark Parish, Lancaster*

**KATHLEEN HOUCK**, *St. Paul Parish, Columbus*

**J. DAVID KARAM**, *St. Agatha Parish, Upper Arlington*

**JOËLLE KHOUZAM**, *Our Lady of Victory Parish, Columbus*

**RICK LARKIN**, *Church of the Resurrection, New Albany*

**MARY LEATHLEY**, *Immaculate Conception Parish, Columbus*

**RALPH MARTINEZ**, *St. Joan of Arc Parish, Powell*

**REVEREND MONSIGNOR STEPHAN J. MOLONEY**,  
*St. Andrew Parish, Columbus*

**CHRISTINE POTH**, *St. Andrew Parish, Columbus*

**JAMIE RICHARDSON**, *St. Vincent de Paul Parish, Mt. Vernon*

**DANIEL ROE**, *Our Lady of Victory Parish, Columbus*

**CHARLES ROWAN**, *St. Dominic Parish, Columbus*

**LOU RUSCILLI**, *Our Lady of Victory Parish, Columbus*

**CONNIE SAUTER**, *St. Paul Parish, Westerville*

**REVEREND DAVID SIZEMORE**, *St. John Neumann Parish, Sunbury*

**DAVID SWIFT**, *St. Peter Parish, Columbus*

**JENNIE WILSON**, *Church of the Resurrection, New Albany*



# THANK YOU!

---

## PAST AND PRESENT BOARD MEMBERS



THE  
CATHOLIC  
FOUNDATION

